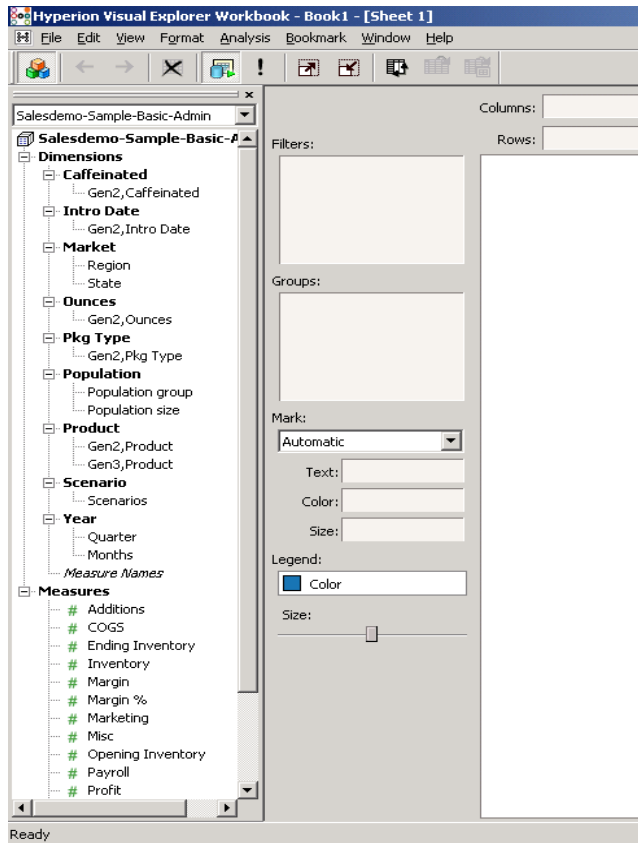




## Creating Custom Generation References in Hyperion Essbase

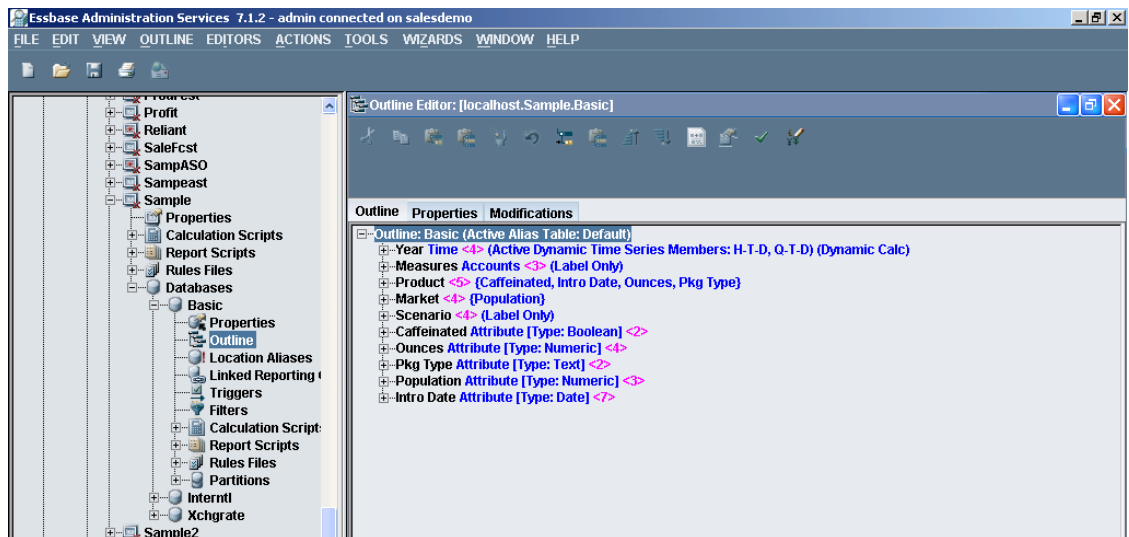
Typically, the dimensions have generation references and are not descriptive of what values are in that generation. In the example below, see Product. You can put the description here instead of the generation references.



You will need to modify the original cube and will need appropriate permissions in Essbase.

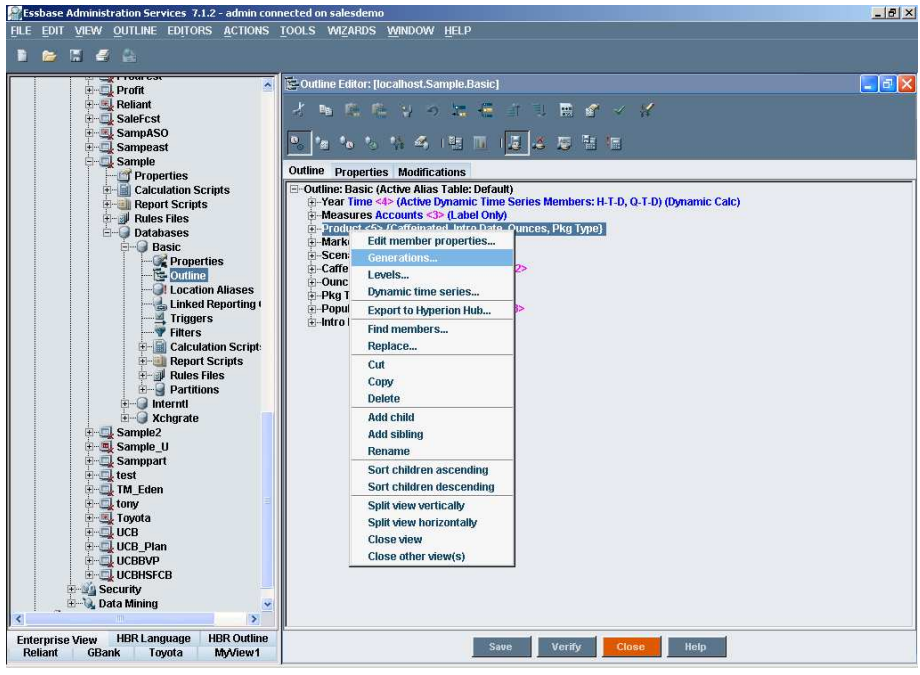
## Changing the Essbase cube settings

1. Open Essbase Administration Services. In this example, we used v7.1.2.
2. Select the appropriate database in the Explorer portion of the view.
3. Expand the table.
4. Select the **Outline**.

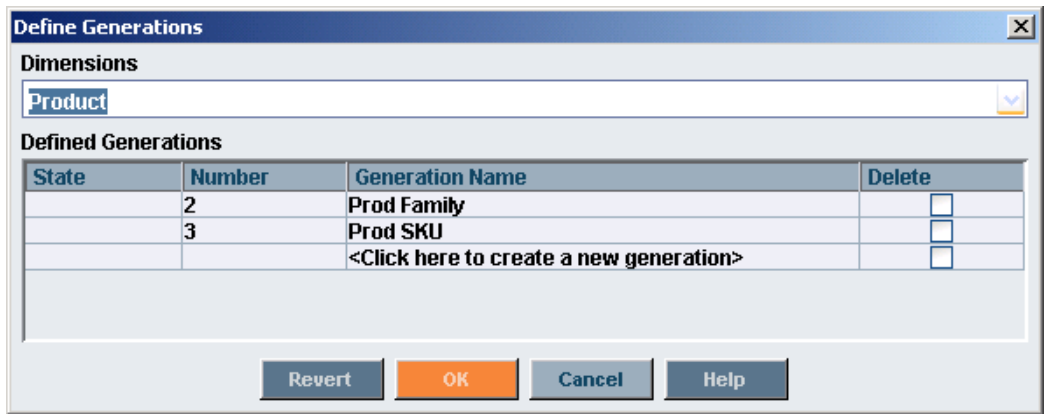


5. Right click on the dimension you want to add the description to.

6. Select **Generations**.

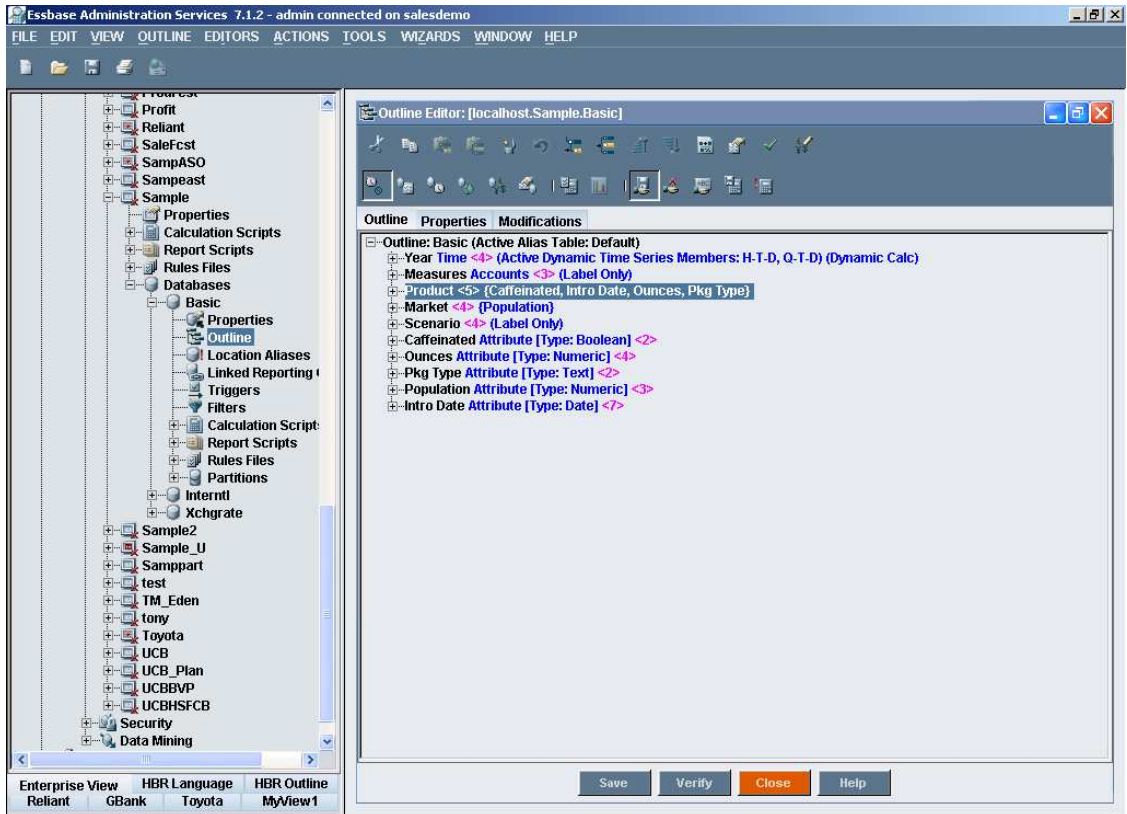


7. Select each generation to be changed and enter a new name.

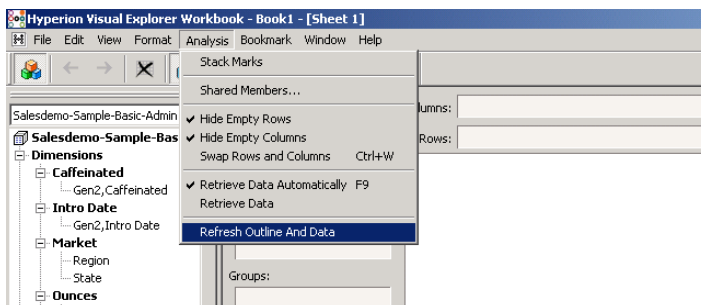


8. Click OK

9. Click Save.
10. Click Close.



11. Open Tableau workbook with the view you want to update.
12. Go to **Analysis > Refresh Outline and Data**.



You should notice that the generation names have been updated.

