

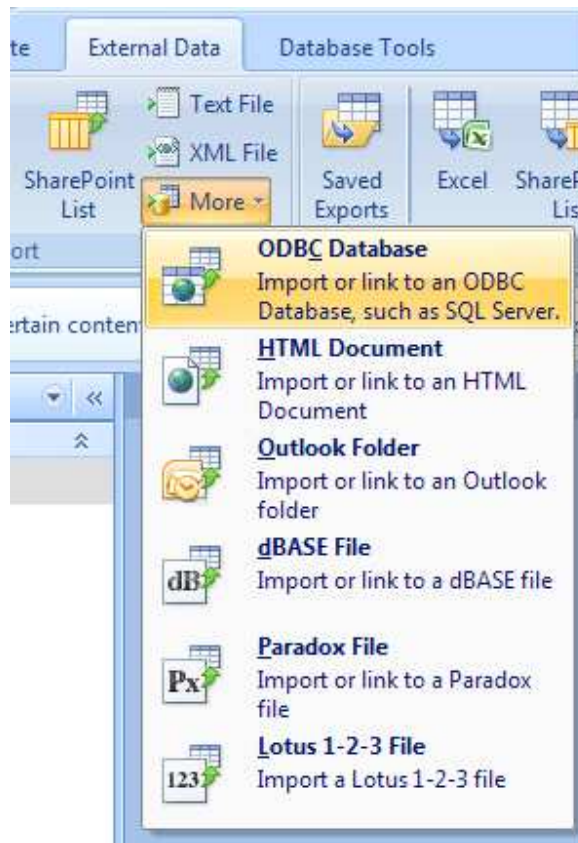
Using MS Access to create ODBC pass-through Connections for Tableau

Currently, Tableau does not have support ODBC connection directly. We recommend setting up a connection through another database like MySQL.

As a temporary measure, you can connect through Access.

Setting up the Connection

1. Create a ODBC connection for your target database. For XP, use: <http://support.microsoft.com/kb/305599>
2. Create a new MS Access file. Choose to link in 'external data'. See screenshot:



3. In the various dialogues that follow, MAKE SURE YOU DO NOT "copy" the data. Instead, choose to LINK to the data.
4. When connecting to pass-through, Access asks you to choose fields for a primary key. You can select multiple fields.

5. When done, close the Access file.
6. Connect to this access file using Tableau. You should see your table link as a choice.
7. Do your Tableau work and then save it as a packaged workbook.

Once you have a packaged workbook, you no longer need to create the ODBC connection on each machine that is going to run Tableau.