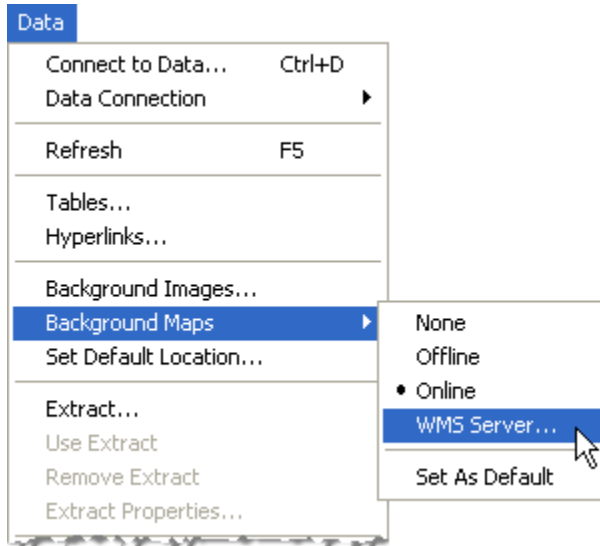


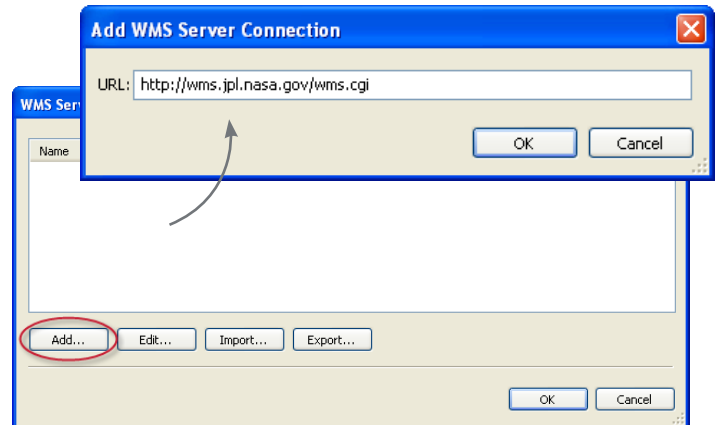
WMS Map Sources

In addition to Tableau's online and offline maps you can connect to a Web Map Service (WMS). When you connect to a WMS server the connection is saved as part of the workbook. You can share the connection with others by exporting the connection as a TMS file. You can also make a specific connection your default map source.

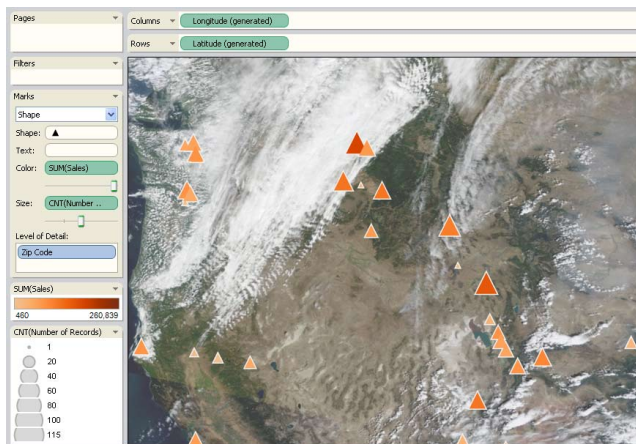
- 1 Select WMS as the Map Source.**
Select **Data > Background Maps > WMS Server.**



- 2 Add a WMS Map Server Connection.**
Click **Add** to type a URL for a WMS Map Server you want to use. You can also add a saved connection by clicking **Import** and selecting a TMS file.

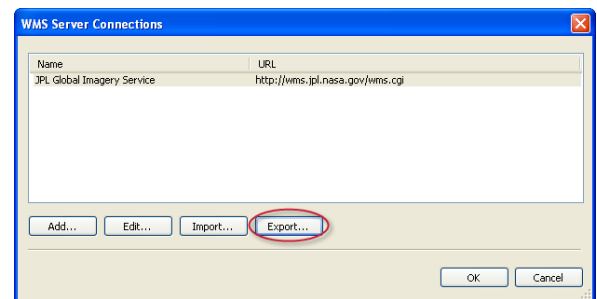


- 3 Click OK to load the Map.**
Click **OK** to close the dialog and load the map.



Simply double-click a geographic field in the Data window to build a map view.

- 4 Exporting Connections**
Sometimes you may want to share a connection with others. Export by selecting a server in the WMS Server Connections dialog box and clicking **Export**. The connection saves as a TMS file that you can then share with others.



Setting a Default Map Source

By default Tableau will use the Online maps as the map source for geographic views. You can set your WMS server to be the default by adding it to the workbook and the selecting **Data > Background Maps > Set as Default**.