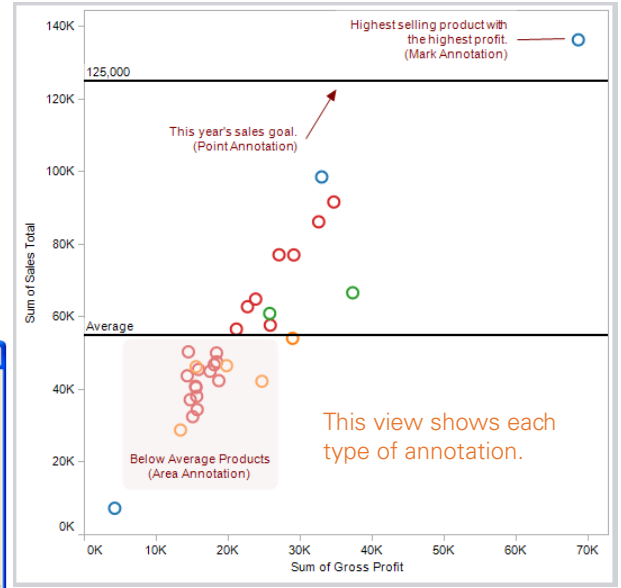
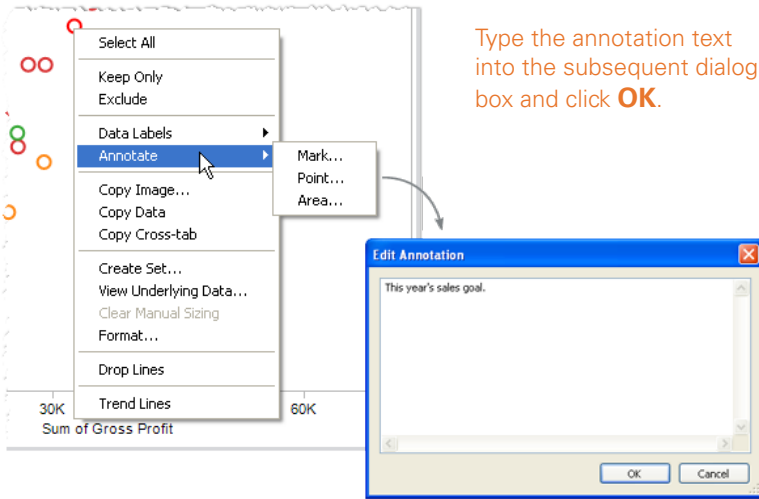


Annotations

Use annotations to call attention to specific points, marks, and areas of the view and to add information that makes the view more understandable. Annotations can be resized, repositioned, and formatted.

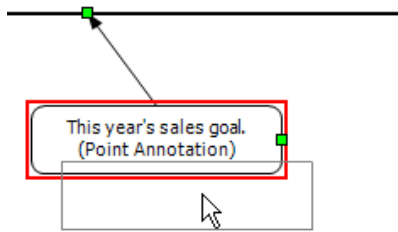
1 Add an Annotation

Right-click a mark, point, or area that you want to annotate. On the context menu select **Annotate** and then select the type of annotation you want to add.

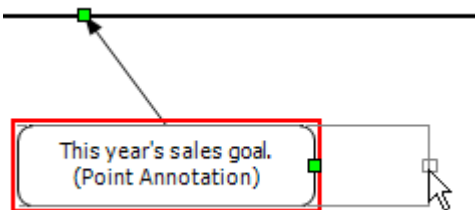


2 Resize and Reposition the Annotation

Click and drag the annotation to a new location.

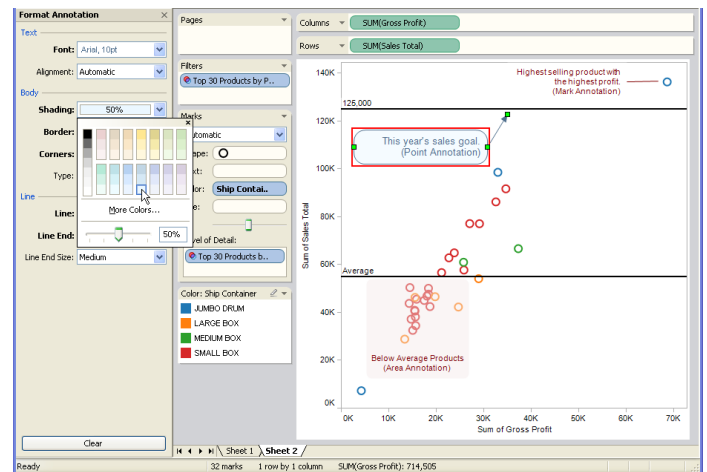


Use the resize handles to resize both the annotation body and the line.



3 Format the Annotation

Right-click the annotation and select Format. In the Format window, you can modify the text, body, and line properties.



Hold the Ctrl key on your keyboard to select multiple annotations and apply format settings all at once.

Remove Annotations

Select the annotation you want to remove, right-click and select **Remove**. You can select several annotations and remove them all at once using the Ctrl key on your keyboard.