



Tableau Version 5

Tableau 5.0 Release Themes



We've developed more than 60 new features across four themes, all designed to let you better ask and answer questions of your data:

- **Active views & dashboards:** find and explore data
- **Authoring rich experiences:** create guided analytic workflows
- **New data options:** broad and deep data access, anywhere
- **Server scalability & performance:** enterprise-ready collaboration

Find Out More



Other ways to learn about Tableau 5.0:

- Online at www.tableausoftware.com/newfeatures
- What's New web seminars:
sign up at www.tableausoftware.com/tableau-5-resources
- New training videos- all updated
- Active dashboards white paper
- Updated product tour



Feedback from Beta Customers



“When I highlight the product category in one legend it highlights that category in both worksheets, **allowing us to rapidly see how mix varies across the regions** and how it’s changed over 5 years. ”

– *Chris Fort, Mannington Mills Inc.*

“We greatly appreciate everyone's hard-work and creativity on the server product! **The server is the pivotal vehicle for our KPI deployment** across the Cornell campus and you're helping us deploy a better product for Deans, VPs, and Business Officers.”

– *Cindy Sadlacek, Cornell University*



Active Views & Dashboards

Active Views and Dashboards



These features keep the attention where it should be: in rich and interactive views of data. They help you find and tell the stories in your data.

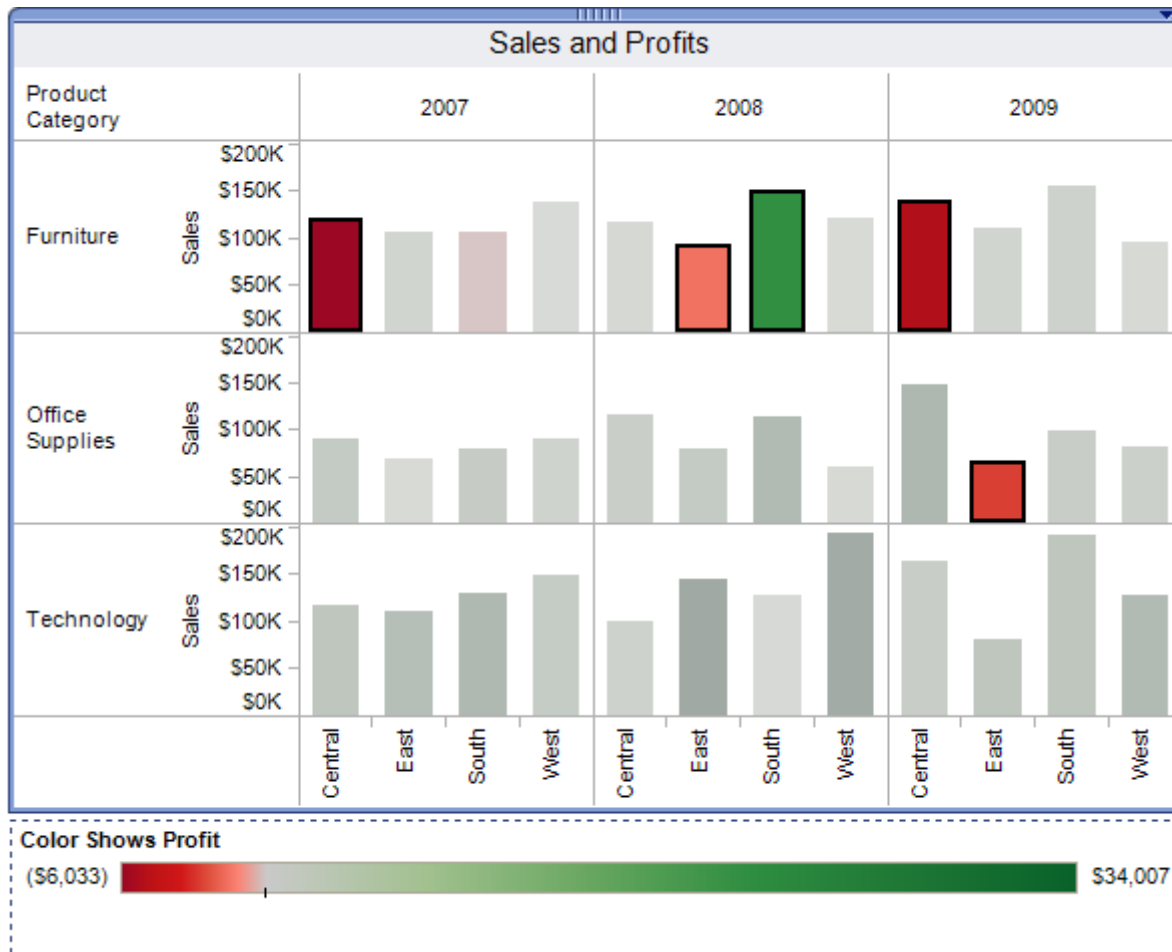
New features in Tableau 5.0:

- Make **selections pop** with new visual selection model
- Highlight and filter related data (called **brushing and linking** in academic research)
- New highlighting and filtering features enable you to find and explore **relationships across data sources**

These features work with **only a few clicks**, no development needed



Make Selected Data Pop



What's this?

A new visual selection model now makes your data pop, making it easy for you to find and explore data.

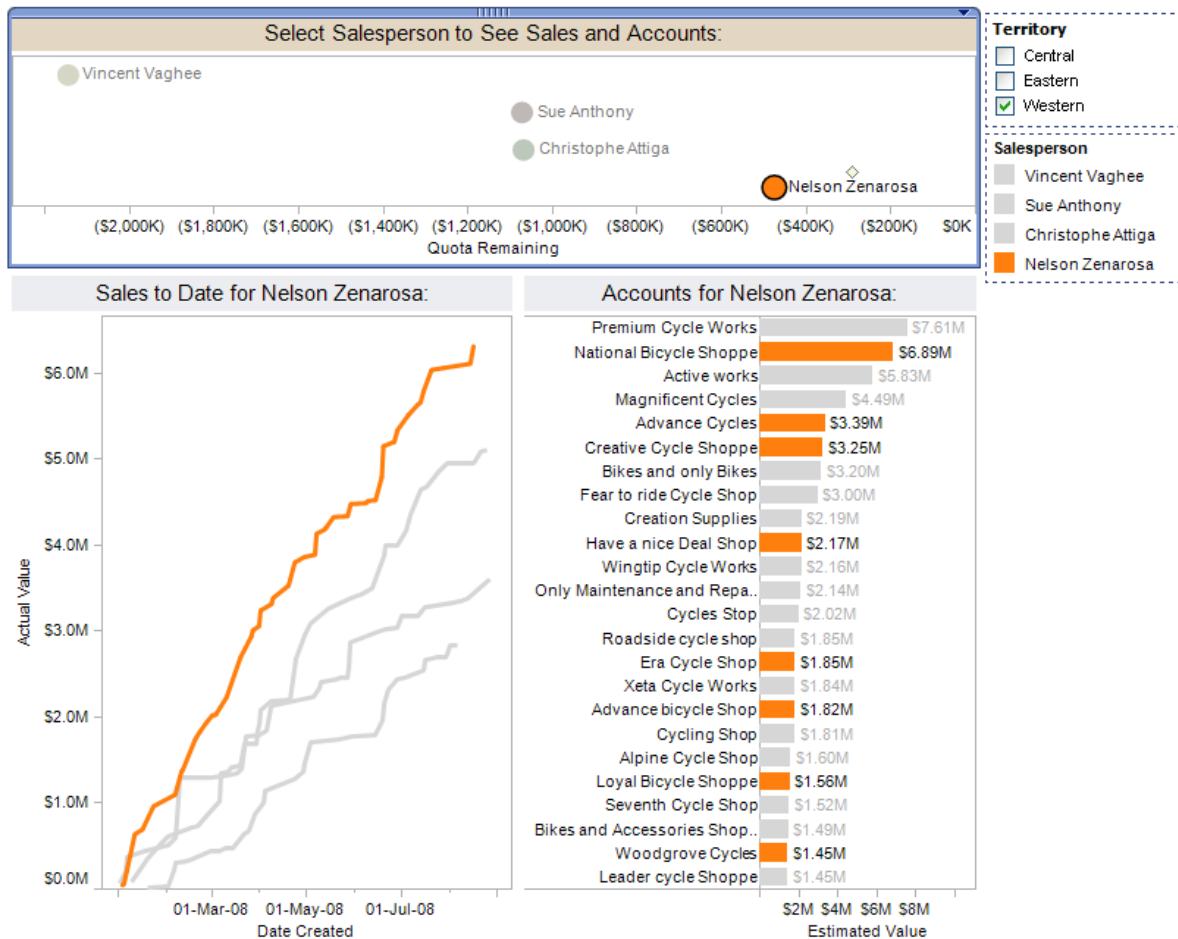
What's happening?

You've selected several points of interest for the last three years. Those are highlighted and the other marks fade back.

Why is it important?

As you're exploring your data, the software makes it abundantly clear where you are. By isolating the selected marks you can more easily recognize patterns and focus on related data.

Highlight in Dashboards



What's this?

This lets you easily discover related data in different views, so you can identify relationships and trends.

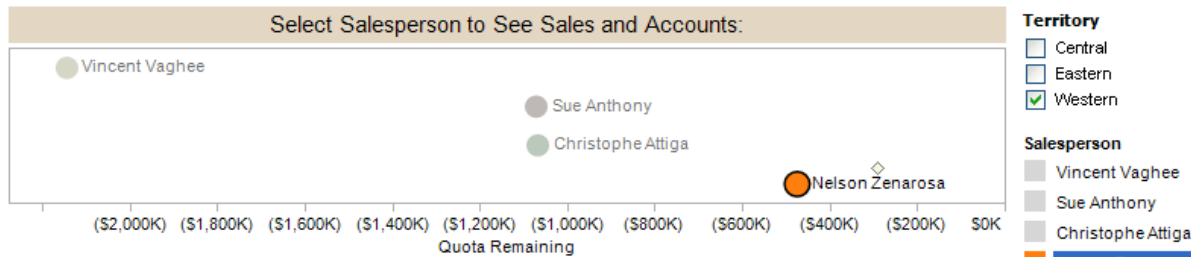
What's happening?

Select data in any view. Because Salesperson highlighting is activated, data related to that Salesperson (Nelson Zenarosa) is highlighted in each pane of the dashboard.

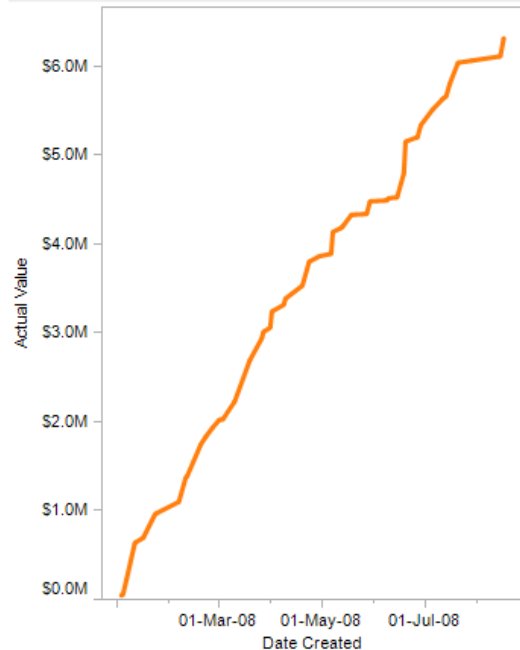
Why is it important?

You can now answer questions like, "How is Nelson performing relative to the rest of the team?" (bottom left), or "Which accounts are Nelson's and how large are they?" (bottom right).

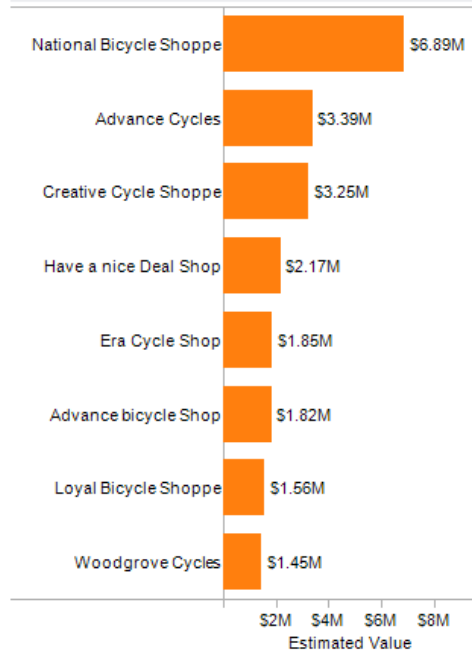
Filter in Dashboards



Sales to Date for Nelson Zenarosa:



Accounts for Nelson Zenarosa:



What's this?

This automatically selects the data in each view that is related to the selection in the master view.

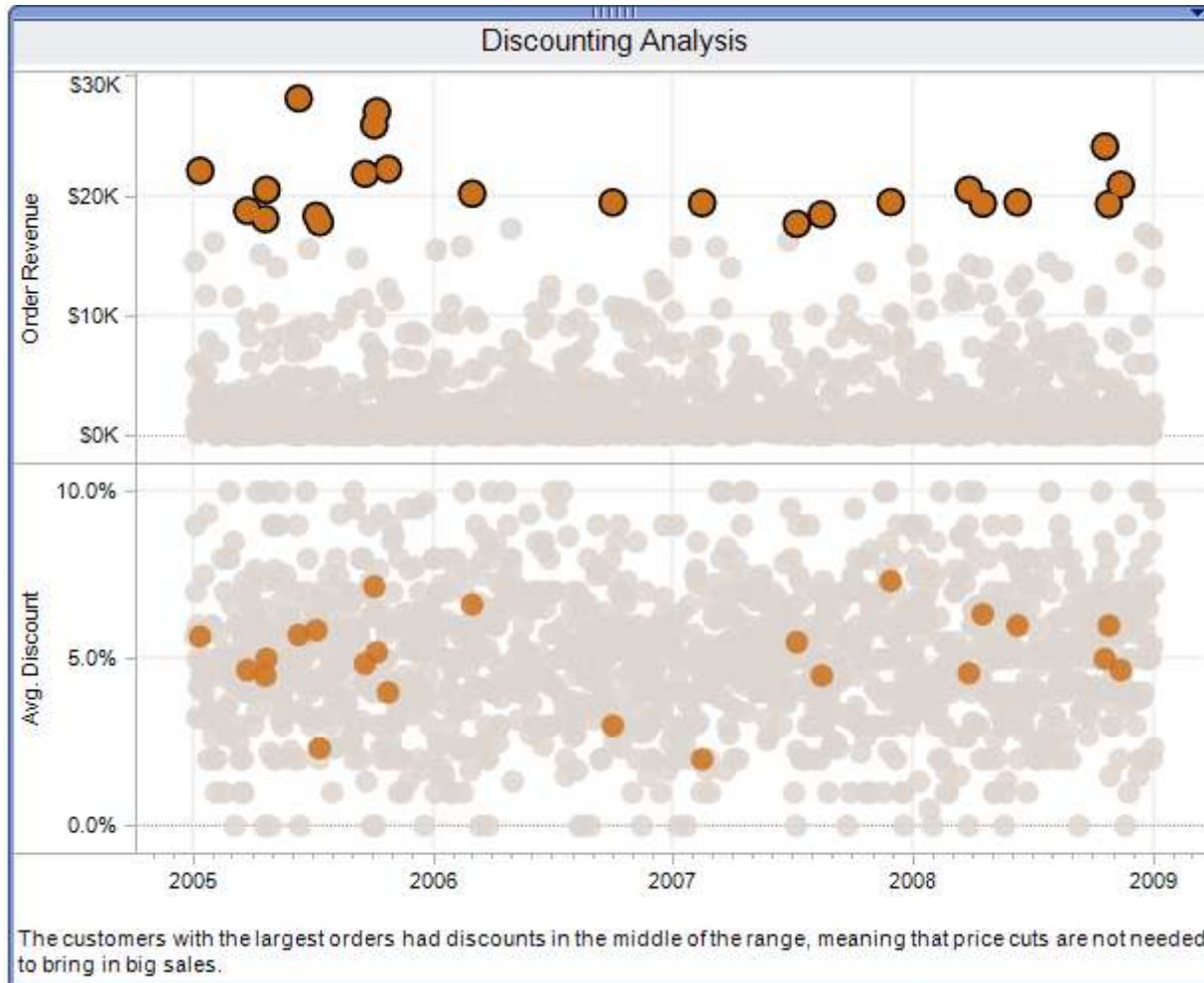
What's happening?

Here, the top view is set as the filter. When you select a salesperson (Nelson), the views below automatically filter *Sales to Date* and *Accounts to Nelson's* data.

Why is it important?

With only a couple of clicks, the user can browse through large data sets. Filtering becomes part of the exploration process, not a separate event. This is useful when there is a lot of data and it is better to filter rather than highlight data.

Highlight Data Points Across Views



What's this?

This automatically highlights the same data points across different views.

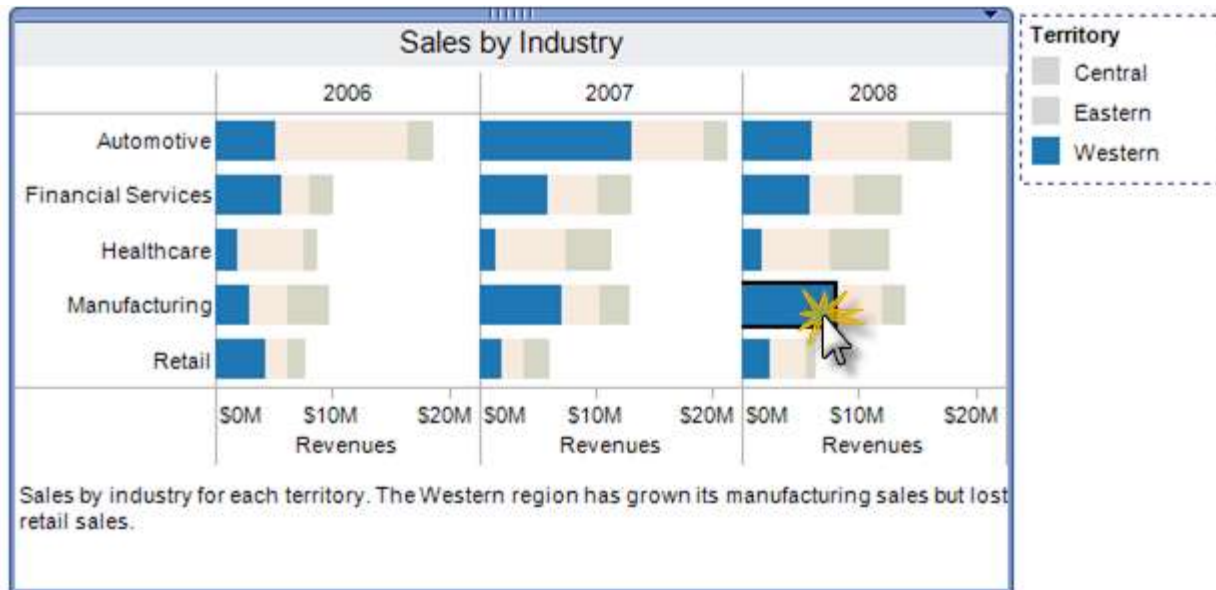
What's happening?

When you select one or more data points in the top pane, Tableau automatically highlights the associated data points in the pane below.

Why is it important?

It allows you to see, for instance, that the orders with the highest revenue amount did not tend to have the highest discounts. Hence, heavy discounting is not needed to bring in large orders.

Highlight Across Views by Category



What's this?

This feature lets you automatically highlight a category across multiple views when you turn on highlighting.

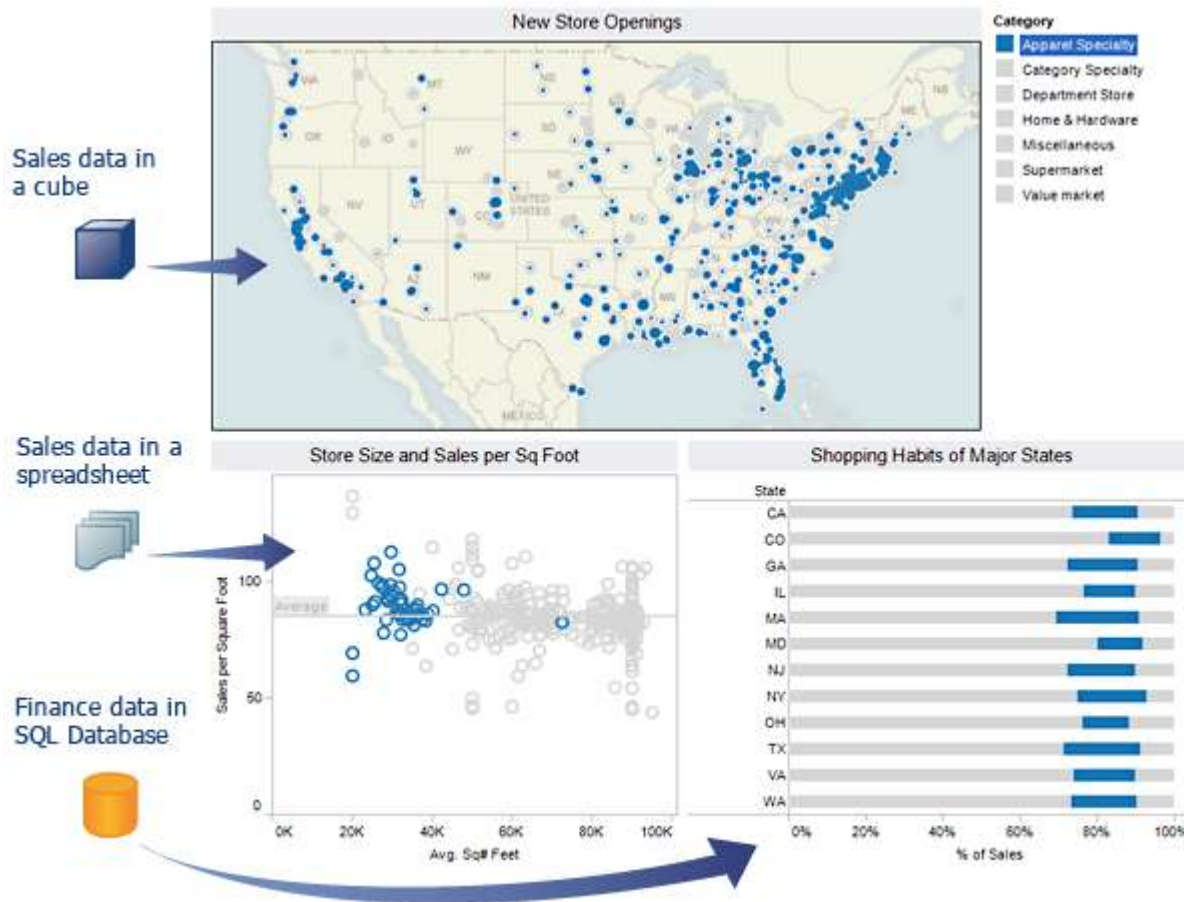
What's happening?

When you select the Western territory in the view for 2008, that territory is highlighted in the bar charts for 2007 and 2008 also.

Why is it important?

It allows the user to see, for instance, that the Western territory has made a lot of ground in the manufacturing and automotive industries, but that retail is shrinking.

Highlight Across Data Sources



What's this?

Because your data isn't always in just one place, highlighting and filtering works across data sources.

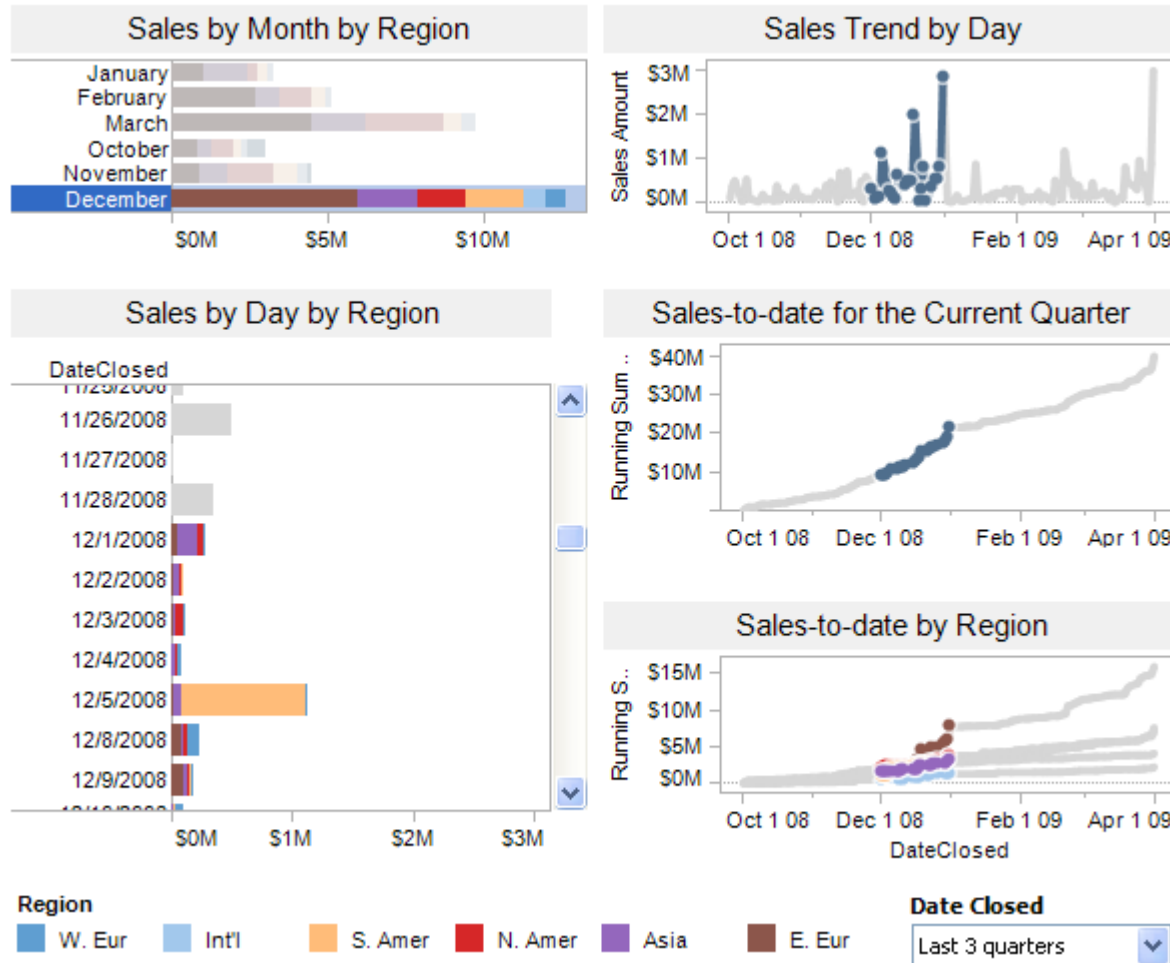
What's happening?

You're working with a dashboard that uses data from three different data sources. You can highlight by store, state, or another category.

Why is it important?

Finding related data is often most valuable when you're working across data sources. This feature lets you link views of data and find trends that would otherwise be hidden.

Highlight Date Trends



What's this?

With one click, you can highlight across multiple views that show time or date.

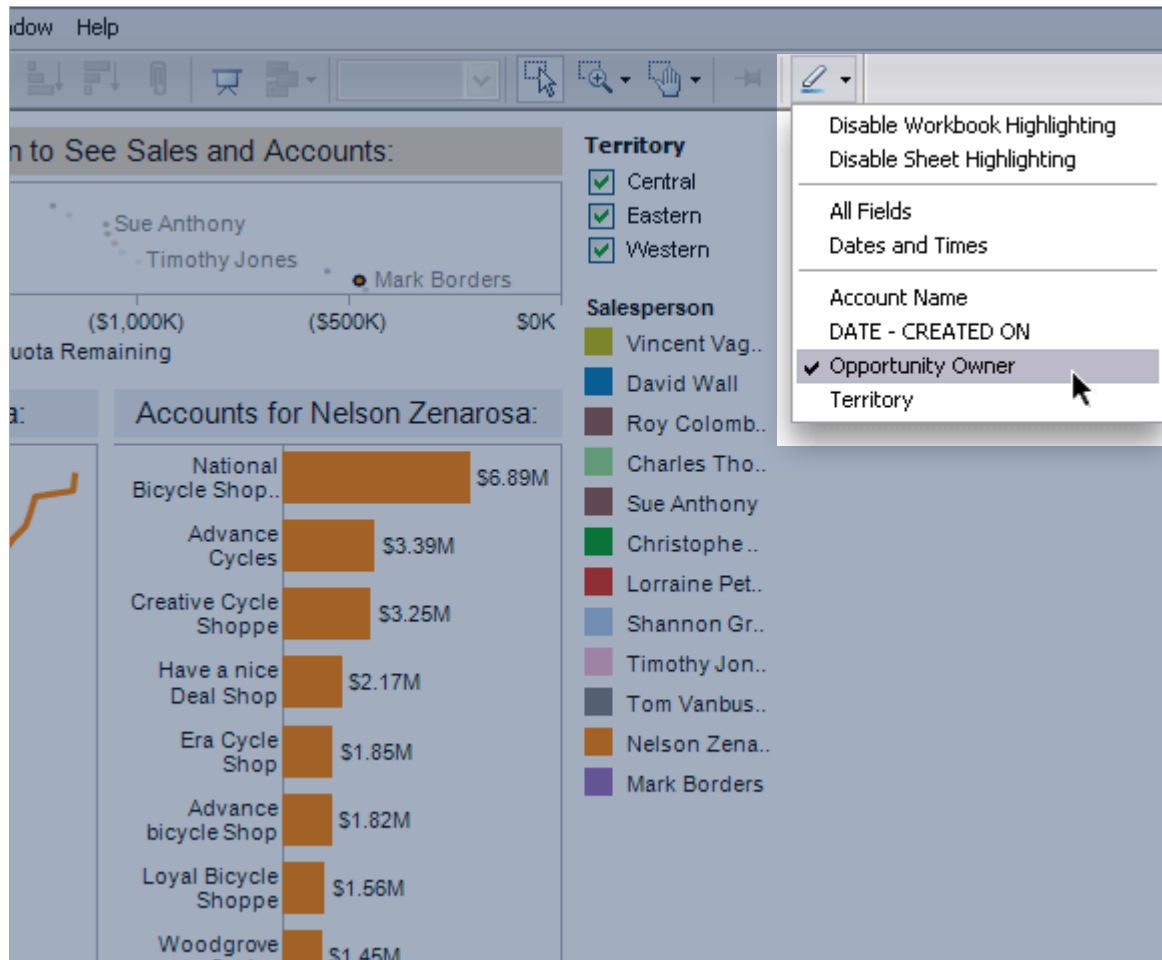
What's happening?

You're working with a dashboard that uses data from three different data sources. You can highlight by store, state, or another category.

Why is it important?

Finding related data is often most valuable when you're working across data sources. This feature lets you link views of data and find trends that would otherwise be hidden.

One-Click Highlighting



What's this?

This feature lets you highlight across categories with a single click.

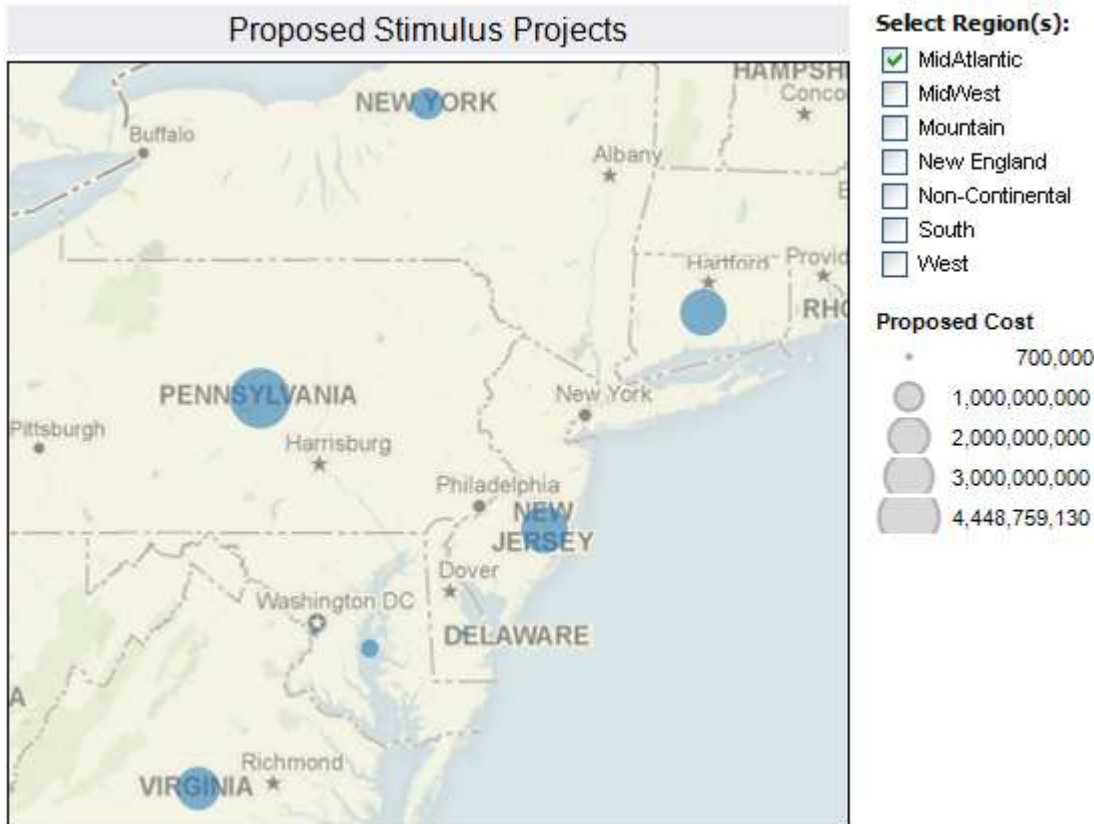
What's happening?

You've clicked on the highlighting menu and chose to highlight all views by opportunity owner.

Why is it important?

Highlighting is a powerful tool that lets you explore data by linking perspectives across views. With Tableau, you can enable this with a single click, so you get all the power of highlighting without needed to do any programming or custom work.

New Quick Filter and Dashboard Styles



What's this?

The background on quick filters has changed to white and the titles on dashboards have been reformatted.

What's happening?

You've created a dashboard with one view, a quick filter, and a legend. The background on the quick filters is white and the title is a light grey that keeps the focus on the data.

Why is it important?

By making quick filters and titles blend into dashboards better, the focus stays on your data and you can visually analyze it without distraction.



Authoring Rich Experiences

Authoring Rich Experiences



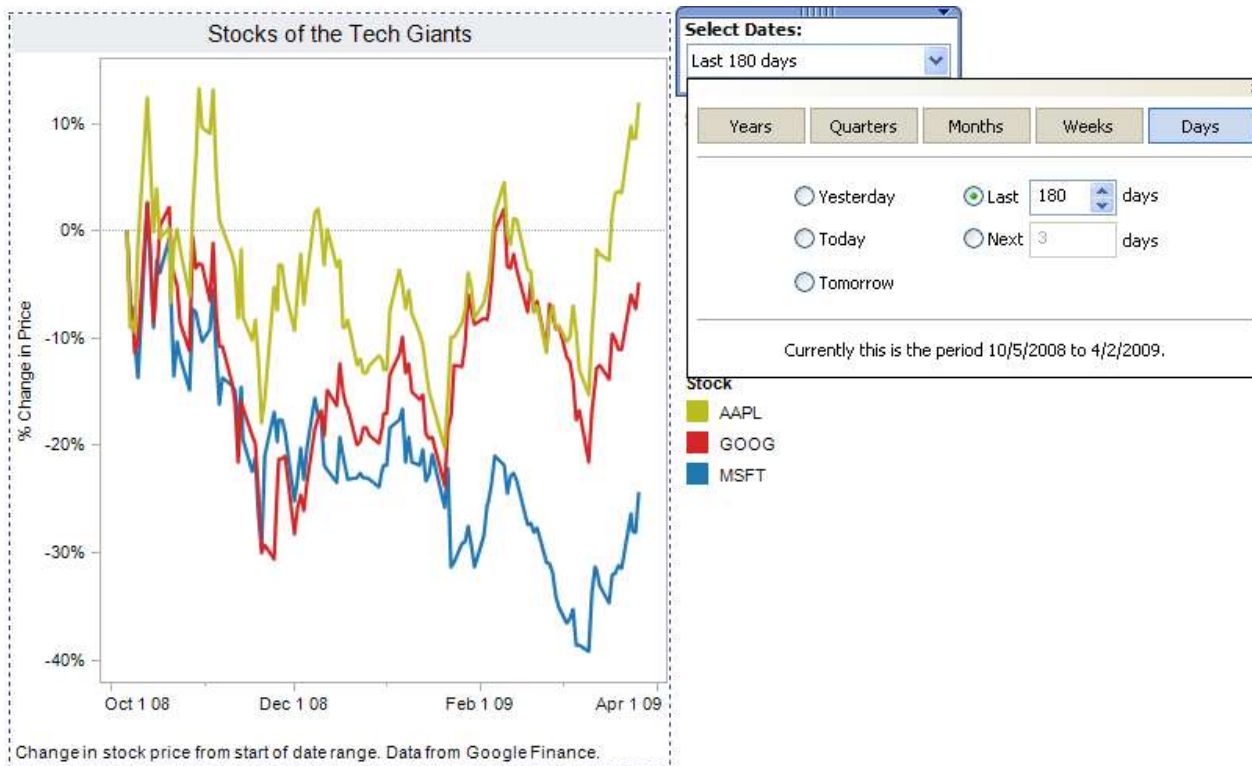
These features let you guide your users through an analysis and allow greater control over the visualization.

New authoring features include:

- **Manage your data:** use powerful new filters, including relative dates
- **Create guided analytic workflows:** design links, highlights and filters to create custom workflows
- **Customize views:** change Quick Filter and legend titles, customize tooltips and add parameters to titles and captions to present exactly the right view
- **Create dual axes charts:** show related data on dual axes

These features work with **only a few clicks**, no development needed.

Relative Date Filters



What's this?

This feature lets you apply date filters for time periods by dates relative to now.

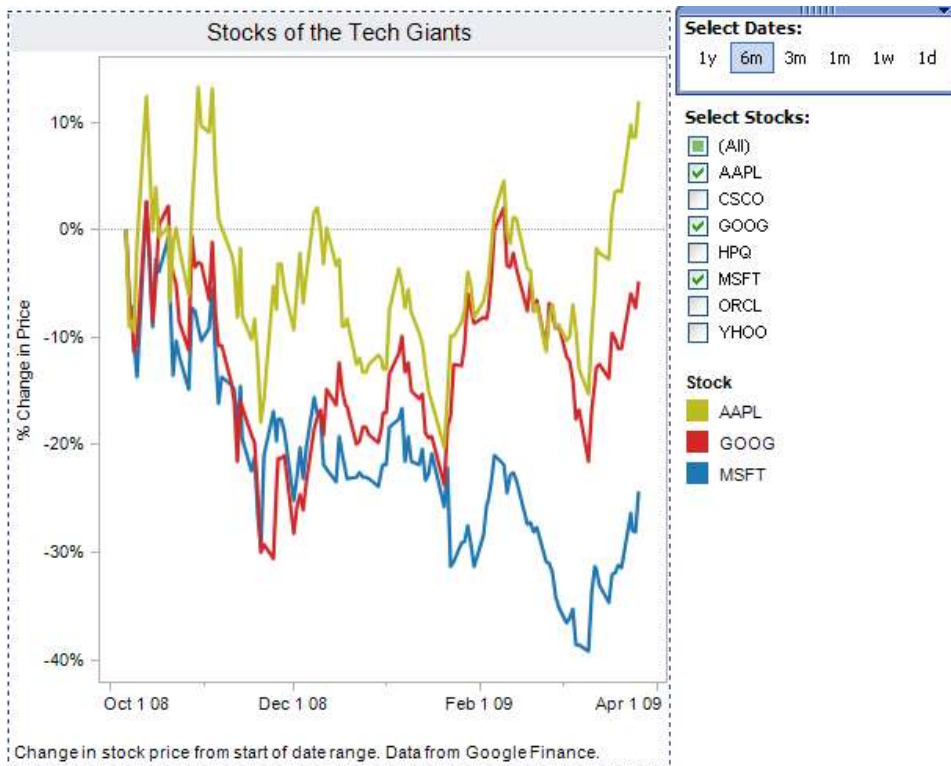
What's happening?

You're filtering by date, but selecting relative time periods rather than absolute dates. Tableau keeps your views up to date as time passes and you add new data.

Why is it important?

Viewing the last six months or six weeks of data is a common need. Now those views stay up to date automatically when you set a relative date range.

One-Click Relative Date Filters



What's this?

This feature lets you apply date filters simply by clicking on that time period in the Quick Filter.

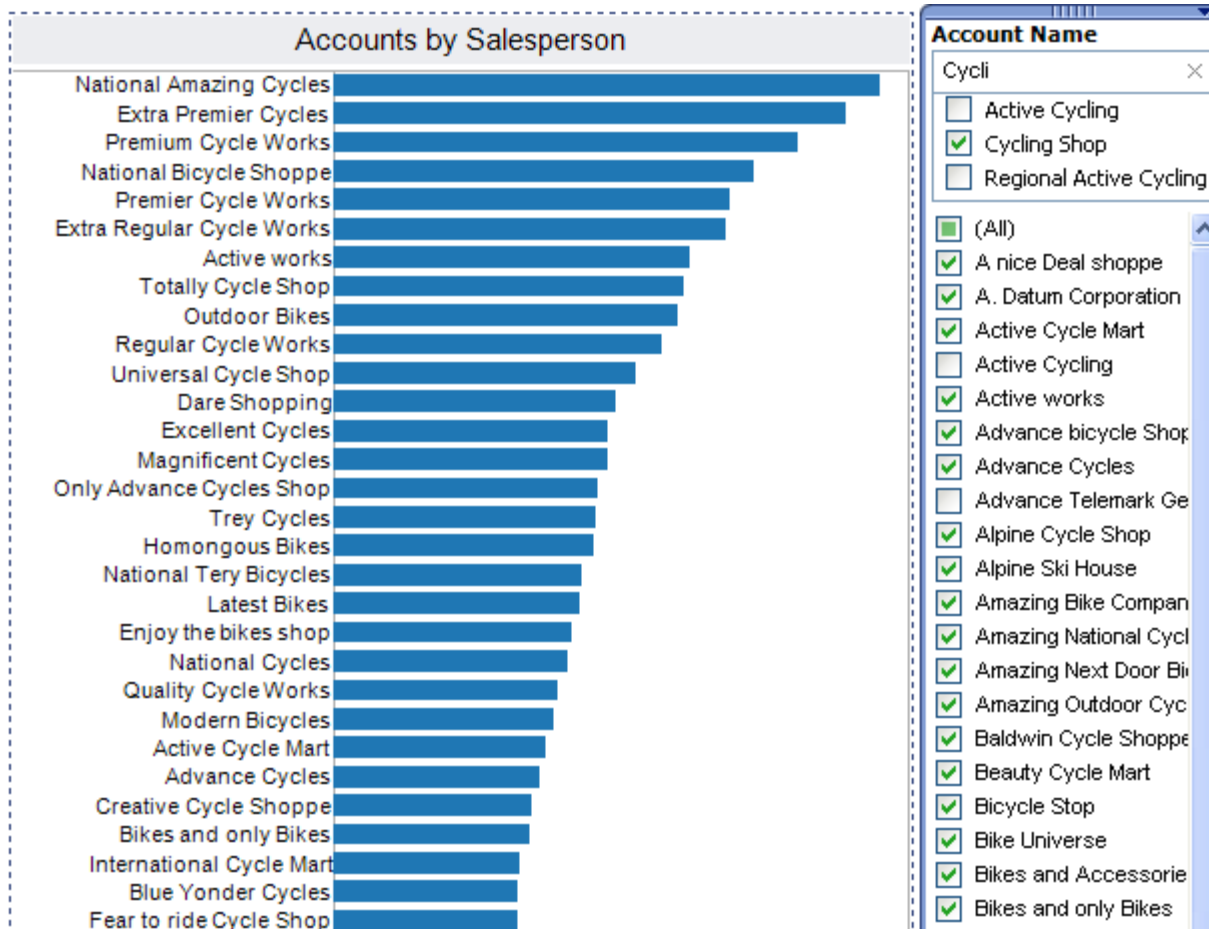
What's happening?

You're filtering by date: in the top dialogue, you've chosen to see this stock data for the last 6 months.

Why is it important?

This allows you to easily browse periods to see how your data is changing. As always, this is available with just a click—no programming and no customization required.

Search Within Filter



What's this?

This feature lets you search within a multiple single value quick filter list for any string.

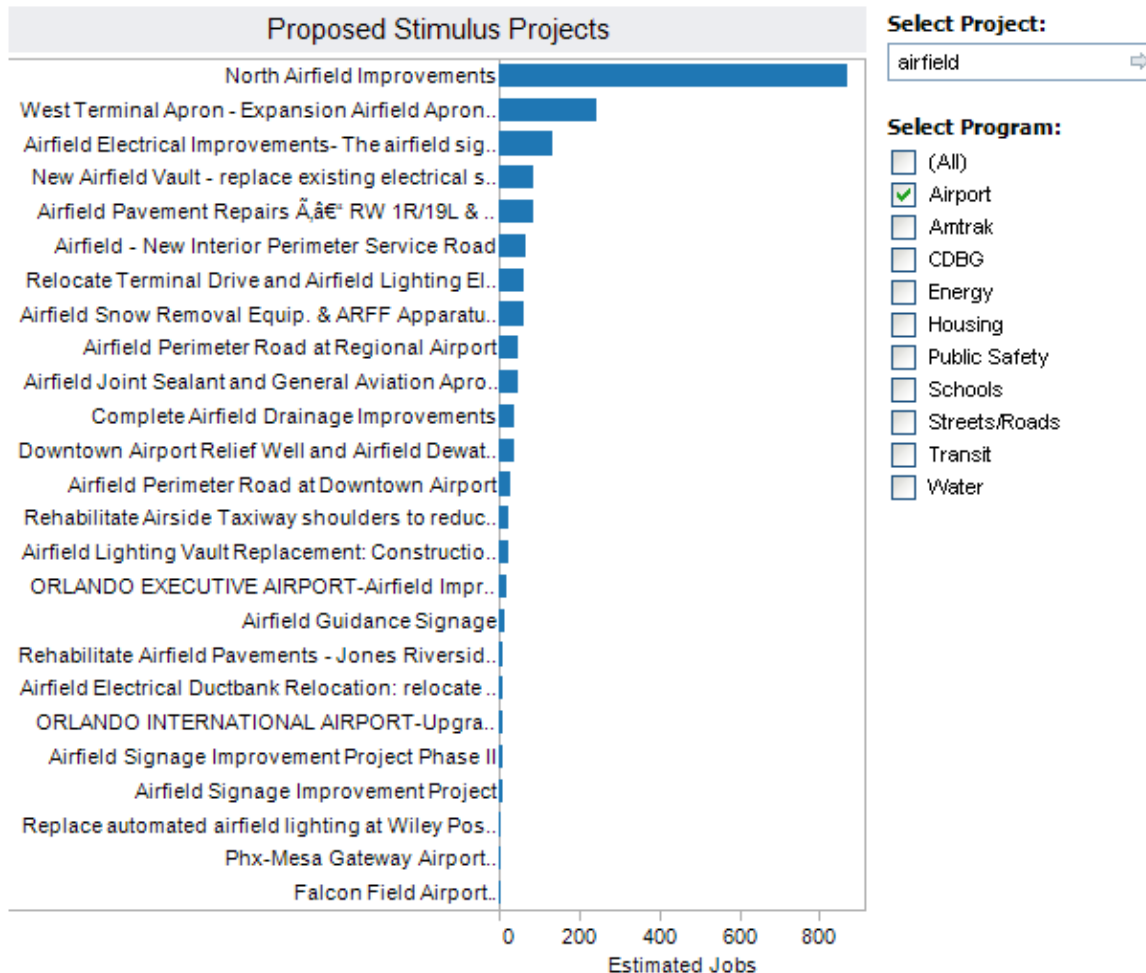
What's happening?

In the first example, you're searching a large product list to find all products that include "Cycling" without searching for them individually. By the time you've typed the first five letters, you're found three options.

Why is it important?

This allows you to search and filter quickly in large data sets and to do ad-hoc filtering.

Wildcard Match in Filter



Data on projects proposed by the National Council of Mayors from Stimuluswatch.org.

What's this?

This feature lets you search for a string without showing the entire filter.

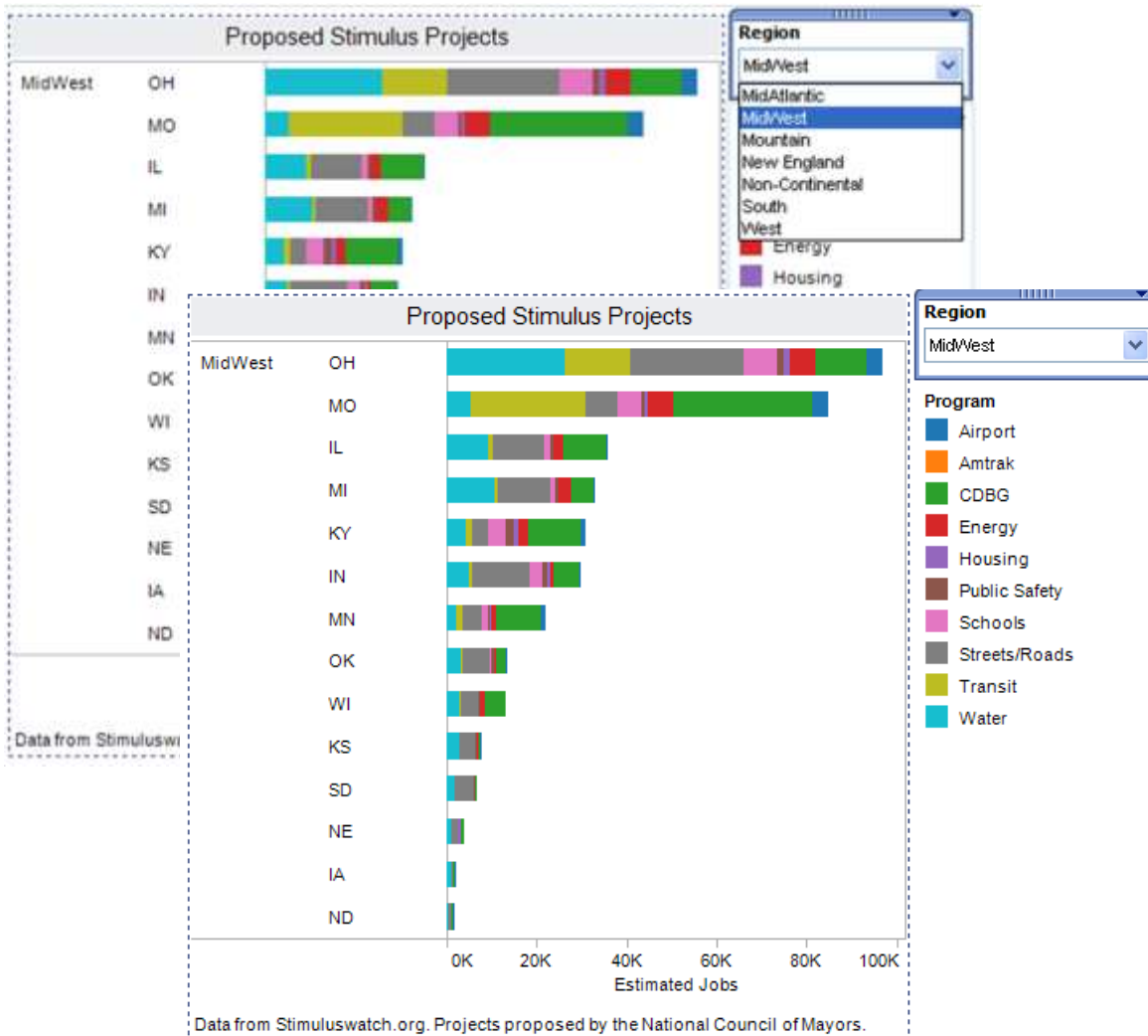
What's happening?

You're viewing stimulus project proposals for airports and are interested in airfields, as opposed to terminals or infrastructure. You select a pattern match filter and enter "airfield" to see all the programs with that term.

Why is it important?

This allows you to search and filter quickly in large data sets. You can perform free-text searches, like in this example. You can also find families of records easily: for example, all sales records for "Toyota Motor co," "Toyota Parts," etc.

Add a Compact Filter



What's this?

Filter to one of several options with a small control.

What's happening?

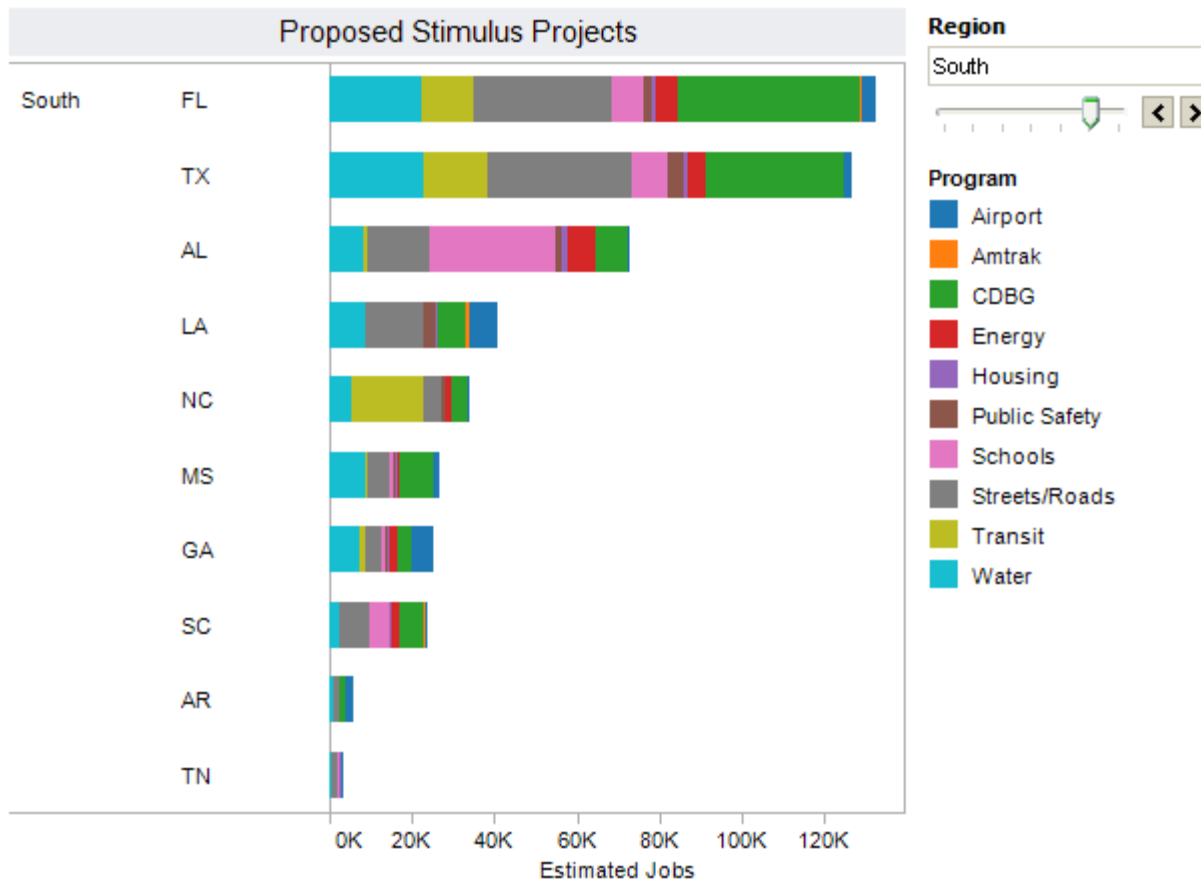
You've chosen to filter on Region, but you only want to select one at a time. Here you've selected MidWest to see all the programs in that region.

Why is it important?

This gives you control over the filtering behavior of your view, as well as the aesthetics. You may want to choose a compact list over a single-value list to save space and make the view more appealing.

This control also works for single-select attributes in cubes.

Slide Through Categories



Data from Stimuluswatch.org. Projects proposed by the National Council of Mayors.

What's this?

This feature lets you filter to one of several options in a slider, so you can easily browse your data.

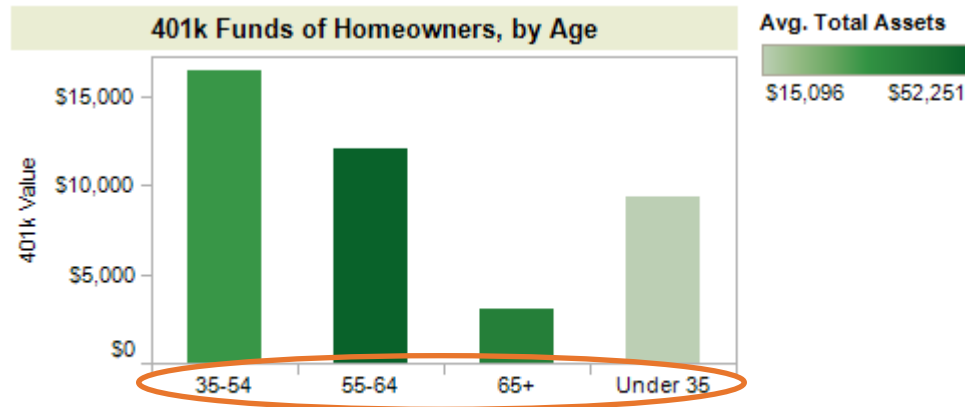
What's happening?

You're still filtering the Stimulus data, but now you're interested in how the proposals change by region. You add a slider control to be able to browse through the regions.

Why is it important?

Sliders encourage clicking through data in a series. Like the compact filter, you can restrict the filter behavior to one selection at a time while guiding the user.

Set Default Sort Order



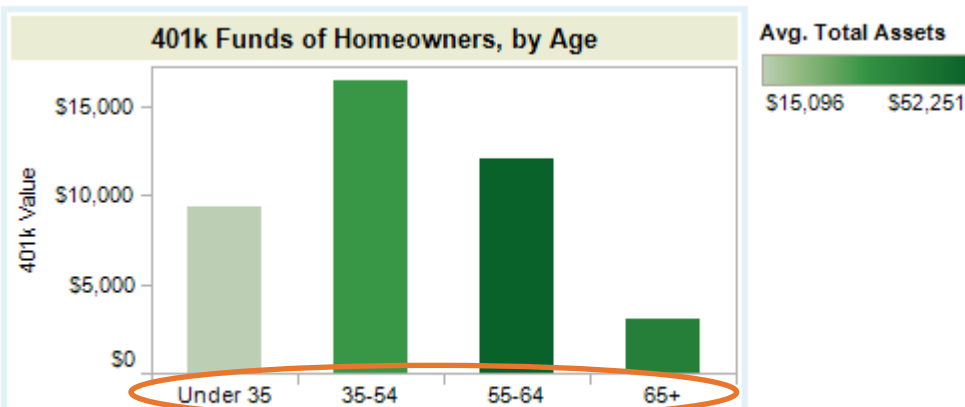
Age 35-54 has the highest 401k balances, but age 55-64 has the greatest total assets.

What's this?

This feature lets you set the sort order of any field to follow a logical pattern.

What's happening?

You've created a chart about assets by age group, but your grouping "under 35" fell to the end in an alphabetical sort. You changed the sort to order it first.

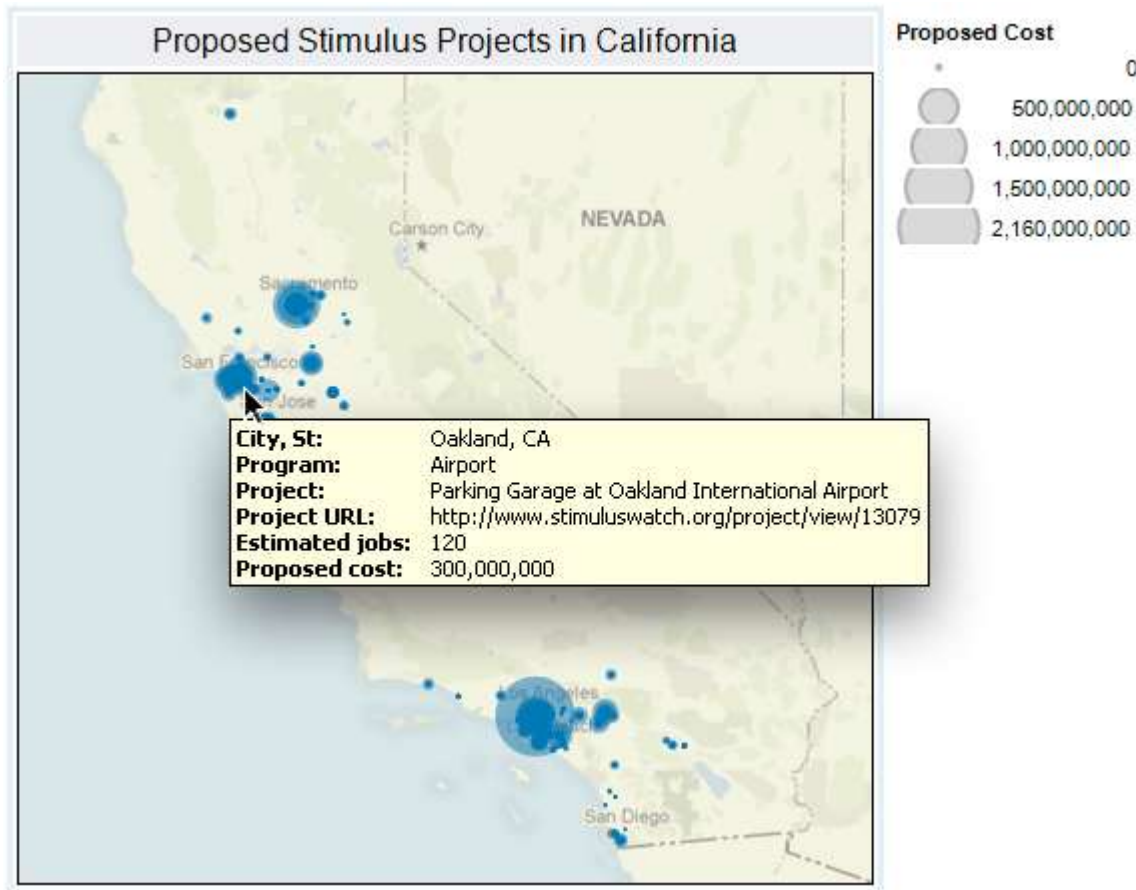


Age 35-54 has the highest 401k balances, but age 55-64 has the greatest total assets.

Why is it important?

When you present data outside of a logical sort order, the result can be very confusing for your viewers. This allows you to set an order when numerical or alphabetical sorts don't work.

Customize Tooltips



What's this?

This lets you select which data is included or excluded from the tooltip. You can even include data that isn't in the view.

What's happening?

You've added program, project, project link, and estimated jobs to the tooltip; and you've excluded latitude and longitude.

Why is it important?

As an author, you want the ability to tell a story with your views. Now you can use the tooltips to focus the viewer on the most important data and add relevant details.

Edit Quick Filter Titles

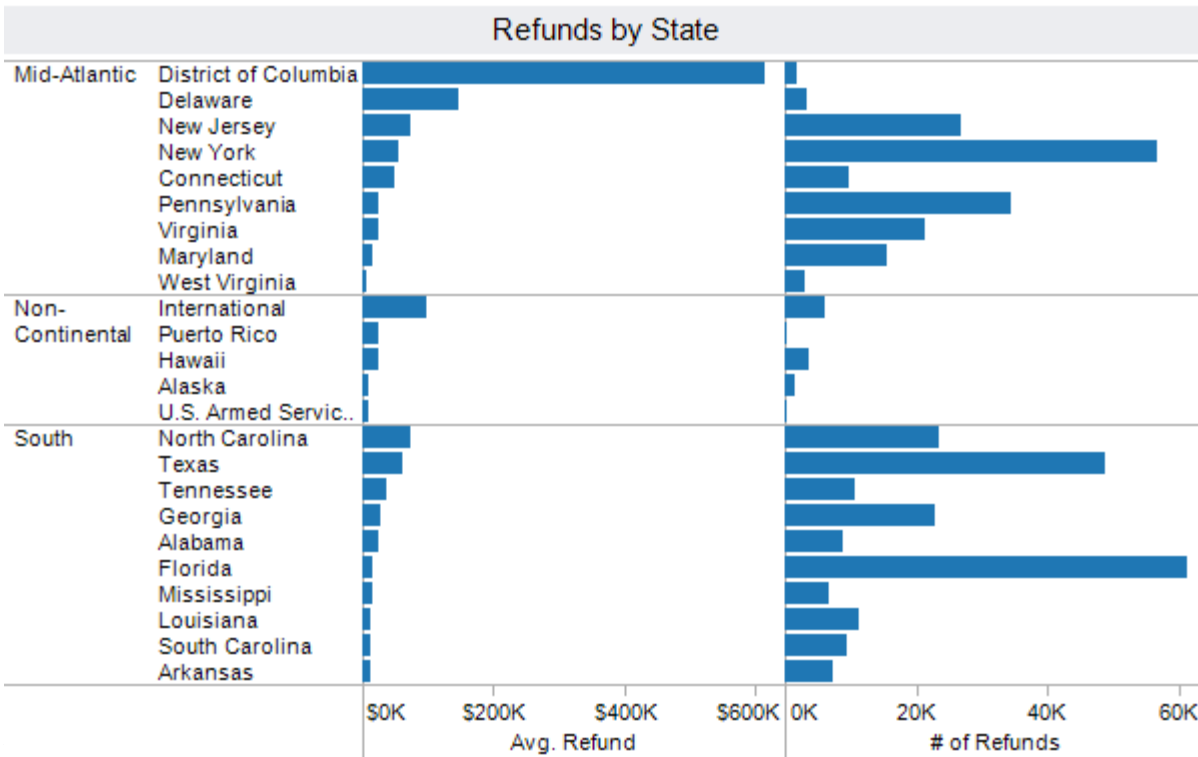


Select a Region to View:

- (All)
- Mid-Atlantic
- Midwest
- Mountain
- New England
- Non-Continental
- South
- West



See Refunds for Tax Type:

What's this?

Now you can change legend titles right on the view.

What's happening?

Here, the left legend prompts you to select regions to view. The top legend title has been edited to prompt you to select tax type.

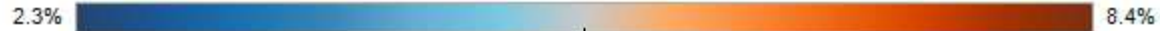
Why is it important?

You may want to prompt the user with instructions about how to interact with a view. Or you may just want to provide some clarification on the legend title.

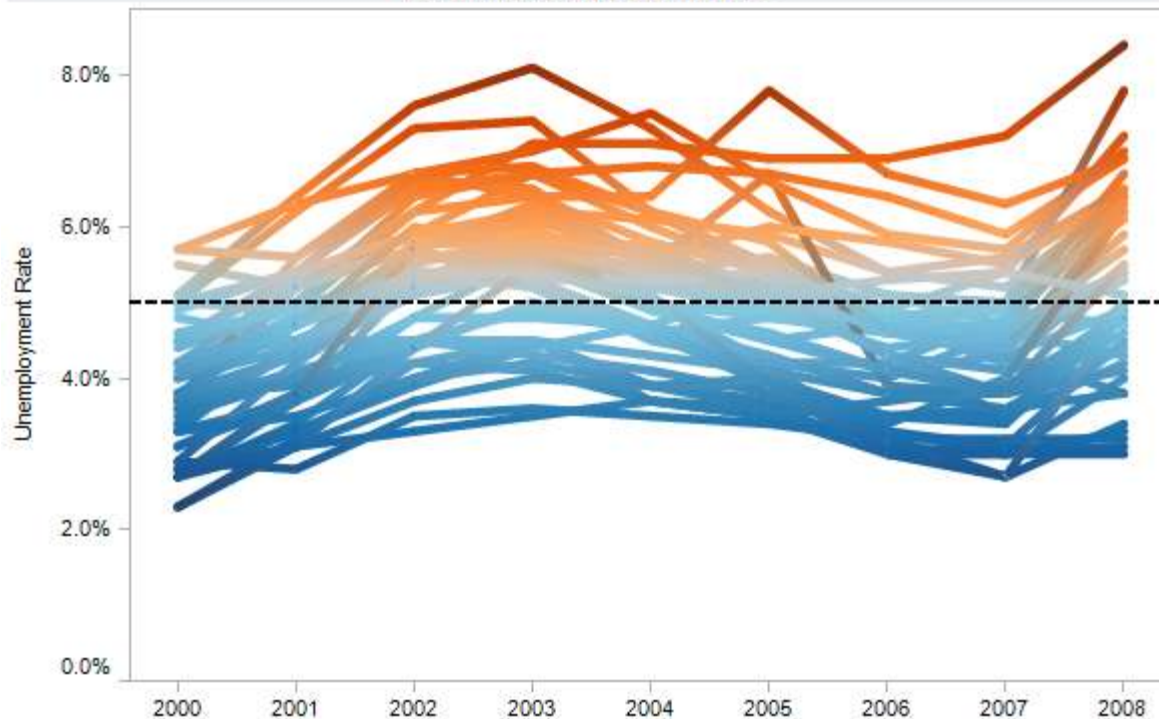
Edit Legend Titles



Unemployment Shown Above and Below the Normal Rate (5%):



Trend in Unemployment Rate



What's this?

This feature lets you customize legend titles, just like you would titles on views.

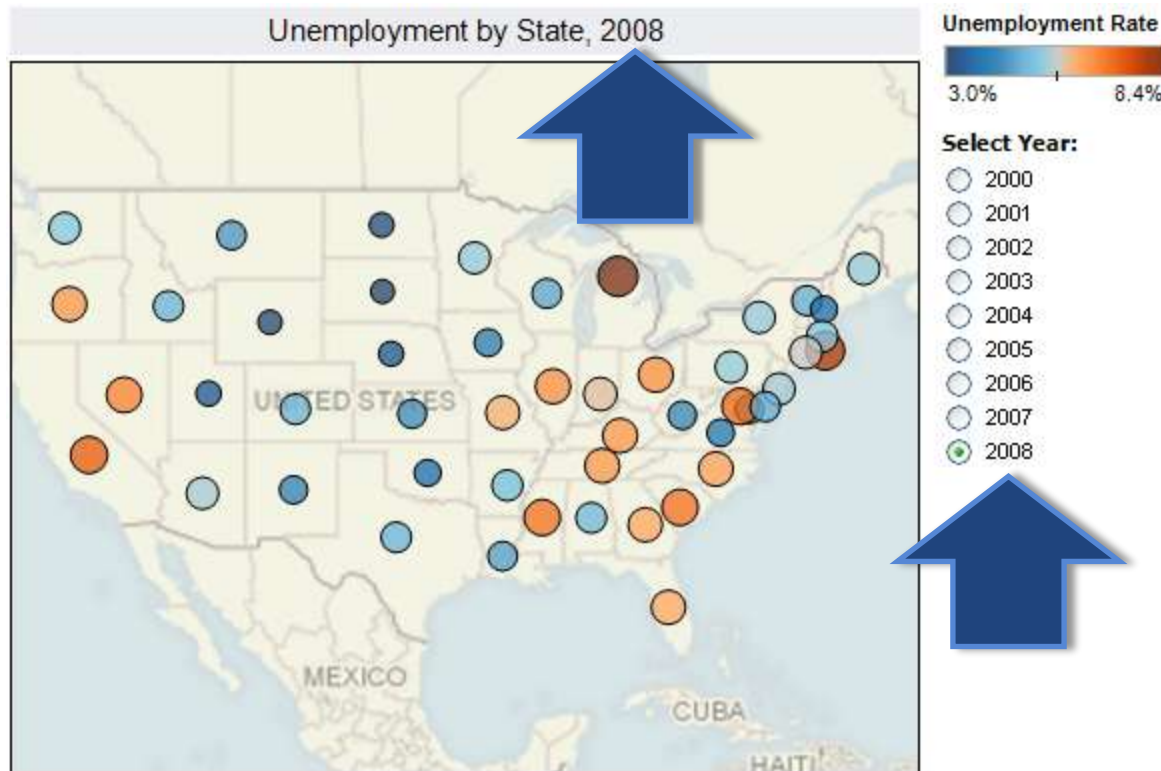
What's happening?

When you add a legend to a view, you can choose to edit it.

Why is it important?

As an author, you want the ability to tell a story with your views. Now you can use the legend to add important data to a view or explain your use of color.

Add Parameters to Titles & Captions



What's this?

You can add parameters to your titles and captions: for example, date or categorical information.

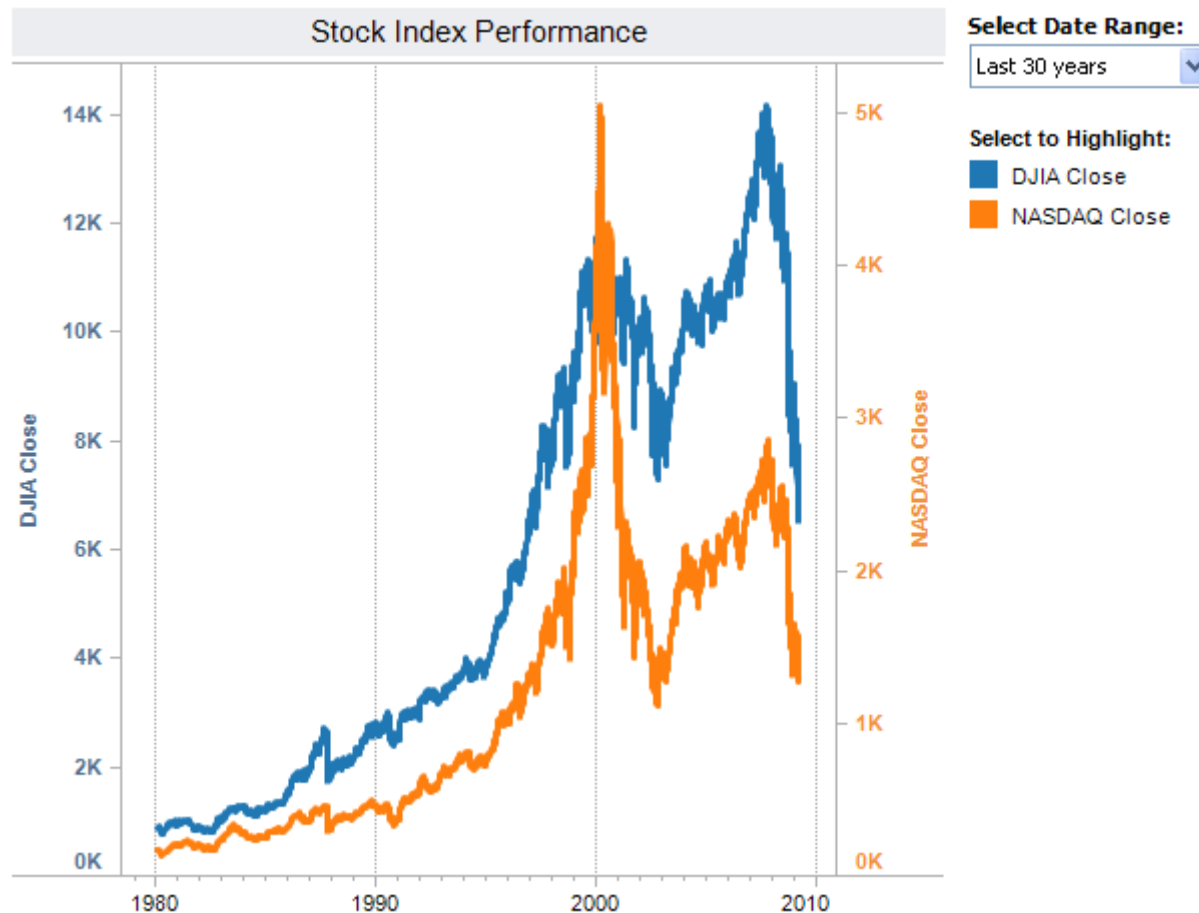
What's happening?

Here, the title has been edited to include the year of the data. If the year of the data changed to 2006, the title would also change automatically.

Why is it important?

Parameters can help you provide clarity for views, especially views that change often.

Show Data on Dual Axes



What's this?

You can plot two variables, which have different units or scales, on the same axis.

What's happening?

You're viewing a dual axes chart. In this case, the NASDAQ close price is in orange on the right axis, and the Dow Jones (DJIA) close price is in blue on the left axis.

Why is it important?

You can see how the relationship between variables is changing, even when the variables use different scales. For example, the Nasdaq peaked about 7 years earlier than the Dow Jones, but at the same relative level.

Create Action "On Click"



The image shows a Tableau workbook titled "Proposed Stimulus Projects". The chart displays a horizontal bar chart with segments representing different programs for various states. A legend on the right lists the programs: Airport, Amtrak, CDBG, Energy, Housing, Public Safety, Schools, Streets/Roads, Transit, and Water. A yellow square highlights a segment for the "Transit" program in the "NC" state, with a mouse cursor clicking on it and the word "click" written next to it. A large blue arrow points from this click to a web browser window below. The browser window shows the "Stimulus Watch" website for "LYNX Blue Line Enhancements" in Charlotte, NC. The page includes a navigation menu, search options, and a "Wiki Description" section with a "General Description" field.

What's this?

This feature allows you to control the actions that occur when users click on defined areas of your workbook.

What's happening?

The user is browsing stimulus projects and clicks on a project. Because you defined a link to that project's URL, the user sees the web page.

Why is it important?

This allows you to define actions related to the selection of your user. As the author, you have a good idea of what information is useful once the user has gotten to a certain point. With actions you have fine-grained control over the results of user actions.

Create Action "On Hover"



The image shows a Tableau dashboard with a chart titled "Proposed Stimulus Projects". The chart is a stacked bar chart with columns for Region and State. A legend on the right lists program types: Airport, Amtrak, CDBG, Energy, Housing, Public Safety, Schools, Streets/Roads, Transit, and Water. A yellow square on the chart for NC is highlighted with a mouse cursor and the word "hover". A blue arrow points from this square to a web browser window showing the "Stimulus Watch" website. The website displays details for the "LYNX BLUE LINE ENHANCEMENTS" project in Charlotte, NC, including a budget of \$110,000,000 and 3000 jobs. It also features a poll asking "Is this project critical?" with "Yes" and "No" buttons.

Region	State	Program
South	FL	Transit
	TX	Transit
	AL	Transit
	LA	Transit
	NC	Transit
	MS	Transit

What's this?

This feature allows you to control the actions that occur when users hover on defined areas of your workbook.

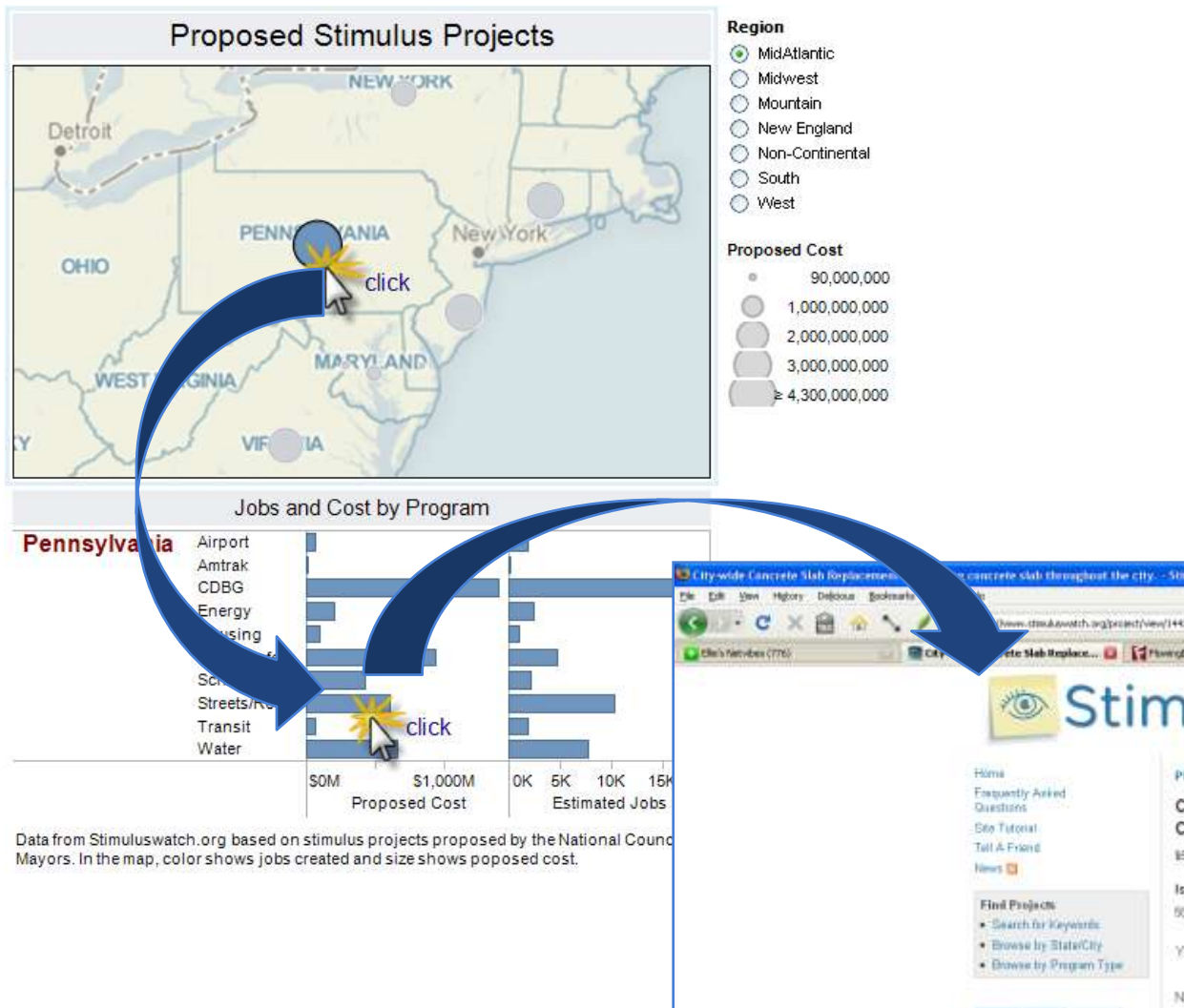
What's happening?

The user is browsing stimulus projects and hovers over a project. Because you defined a link to that project's URL, the user sees the web page.

Why is it important?

This allows you to define actions related to the selection of your user. As the author, you have a good idea of what information is useful once the user has gotten to a certain point. With actions you have fine-grained control over the results of user actions.

Create Guided Analytic Workflows



What's this?

This feature allows you to control the actions that occur when users do certain things in your workbook. You can select whether the action is explicit, or occurs on hover or select.

What's happening?

The user is browsing stimulus projects and selects a project. Because you defined a link to that project's URL, the user then sees the web page.

Why is it important?

This allows you to define analytic workflows to guide your users through certain actions. As the author, you have a good idea of what information is useful once the user has gotten to a certain point. With actions you have fine-grained control over the results of user actions.

Customize Details View



What's this?

This feature allows you to show users exactly the details you want to show, by creating a pane in your dashboard and filtering to details there.

What's happening?

The user is browsing stimulus projects by city in Washington State and selects Everett. The pane below serves exactly the details that you've authored.

Why is it important?

This gives you another level of control over information presented to people who use your workbooks.

Jobs Created: Everett, WA

City	Program	Project	
Everett	CDBG	Lions Park Renovation	75
	Housing	ARTSPACE Housing	100
		CHIP Program	10
		Habitat for Humanity Housing	12
	Public Safety	Fiber Optic Network	40
	Schools	Artspace Education Center	75
	Streets/Roads	ITS/Signal Improvements	25
		Pavement Overlay	30
	Water	Bond Street Combine Sewer Overflow	60



New Data Options

New Data Options



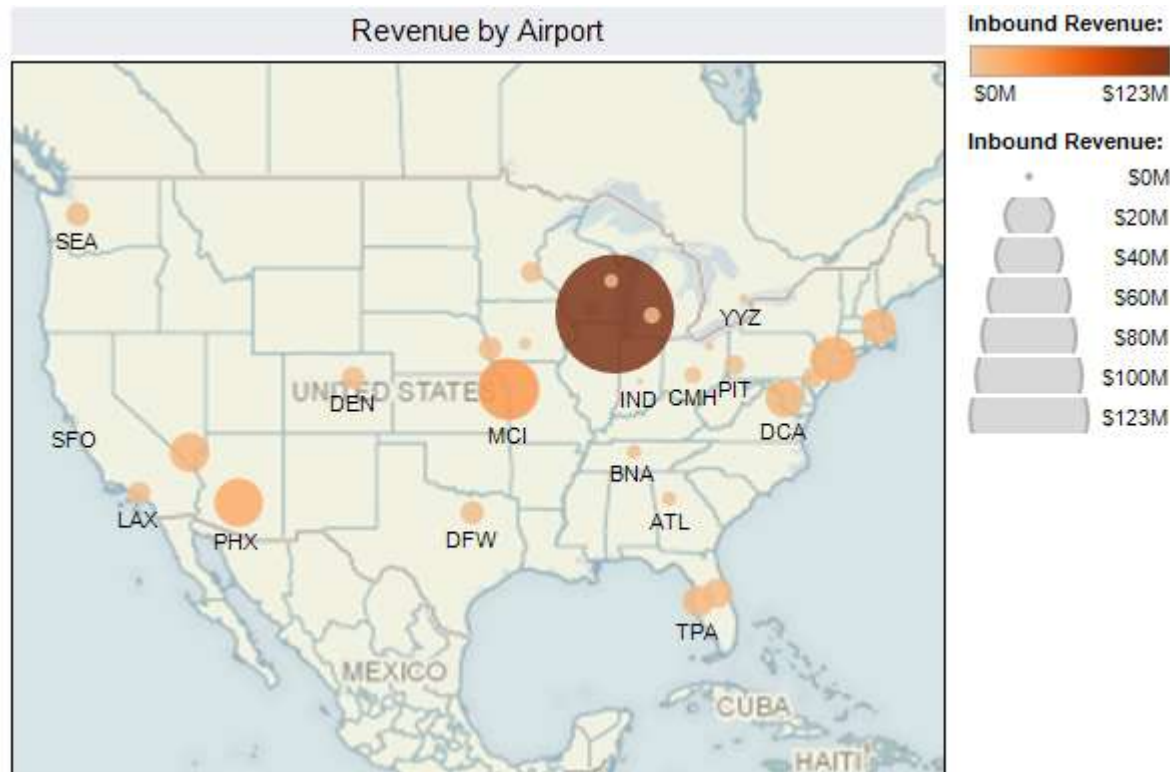
These features let you answer any question, no matter what the data is.

New features that support working with data include:

- **Custom geocoding:** create specialized regions or map international data by customizing map areas
- **Broad data:** connect to even more file formats; more support for cubes
- **Data anywhere:** work offline with exactly the data you need in extracts
- **Secure data:** support for SSL
- **Data faster:** cut-and-paste from email or the web directly into Tableau

All the new data types are supported in both Tableau Desktop & Server.
Authoring features such as custom geocoding require Tableau Desktop.

Add Custom Geocoding Data



What's this?

This feature allows you to augment Tableau's maps by generating your own geocoded areas.

What's happening?

You've create custom areas in Tableau that correspond to the major US airports by importing a file with the geocoded data.

Why is it important?

You may want to encode data on a map according to areas such as Metropolitan Statistical Areas, watershed areas, sales territories or other custom areas. You can also add region data for countries other than the U.S., which Tableau currently does not include.

Add Custom Geocoding Data (continued)



What's happening?

You've created custom geocoding for store locations in France. Now you map revenues by size with profit margin shown on color.

Why is it important?

You may want to analyze data by stores, facilities or other custom entities. Now you can create those entities as geocoded locations in Tableau and analyze any data that refers to them.

Access Data Across Files



Support for new file formats:

- Tab delimited
- Space delimited
- Colon delimited
- Pipe delimited

And Stay Up to Date

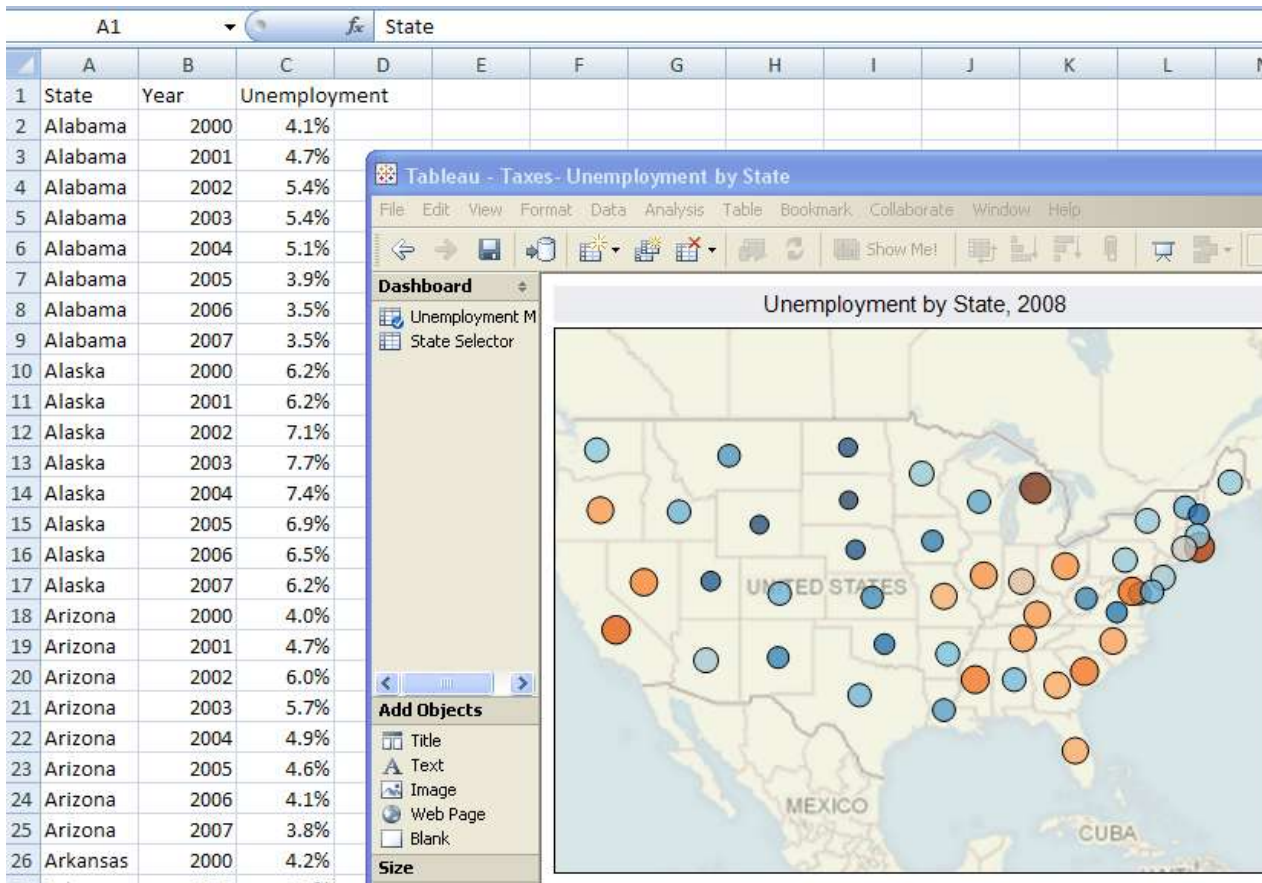


Support for new database versions:

- Postgres 8.3
- Oracle11g
- MySQL 5.1
- Vertica v3
- Teradata 13
- DB2 v9.5



Keep Excel and Text Files Open



What's this?

This feature lets you keep your data files open while you're working in Tableau, and refresh as needed.

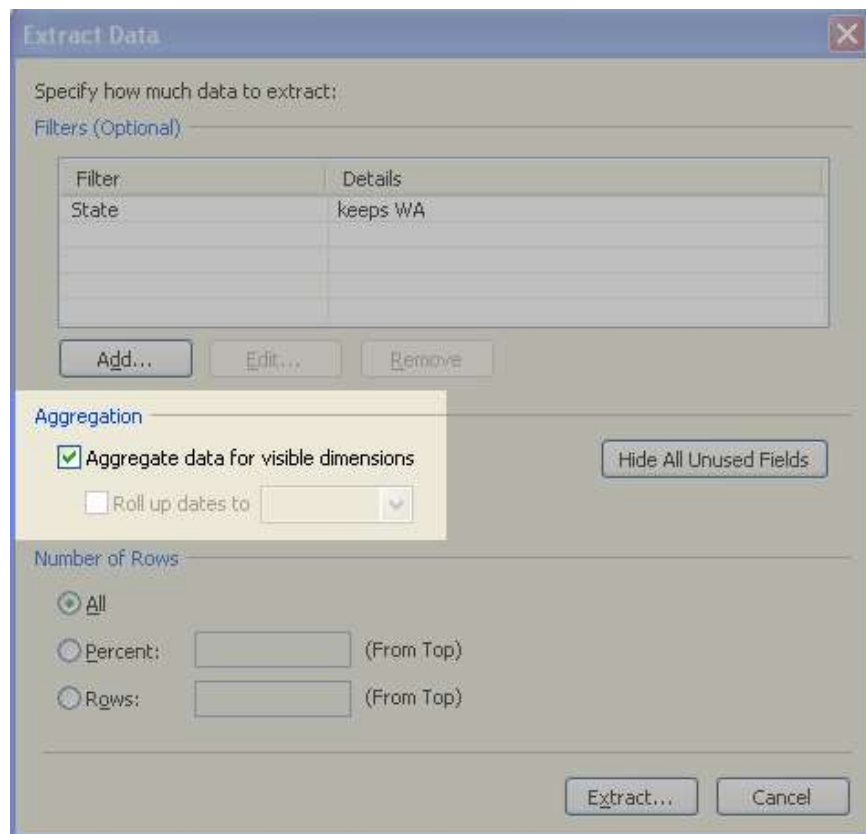
What's happening?

You're working with unemployment data right in Tableau while you have the Excel file open.

Why is it important?

You often need to see or change the source data as you work. Tableau makes it easy for you to work across files, without opening and closing your source data.

Extracts: Aggregate Data



What's this?

This feature allows you to extract only the fields needed to construct your views.

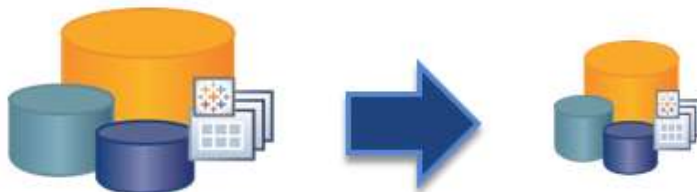
What's happening?

You're choosing to aggregate data for visible dimensions. Now only the data that is visible in your views will be included in the extract.

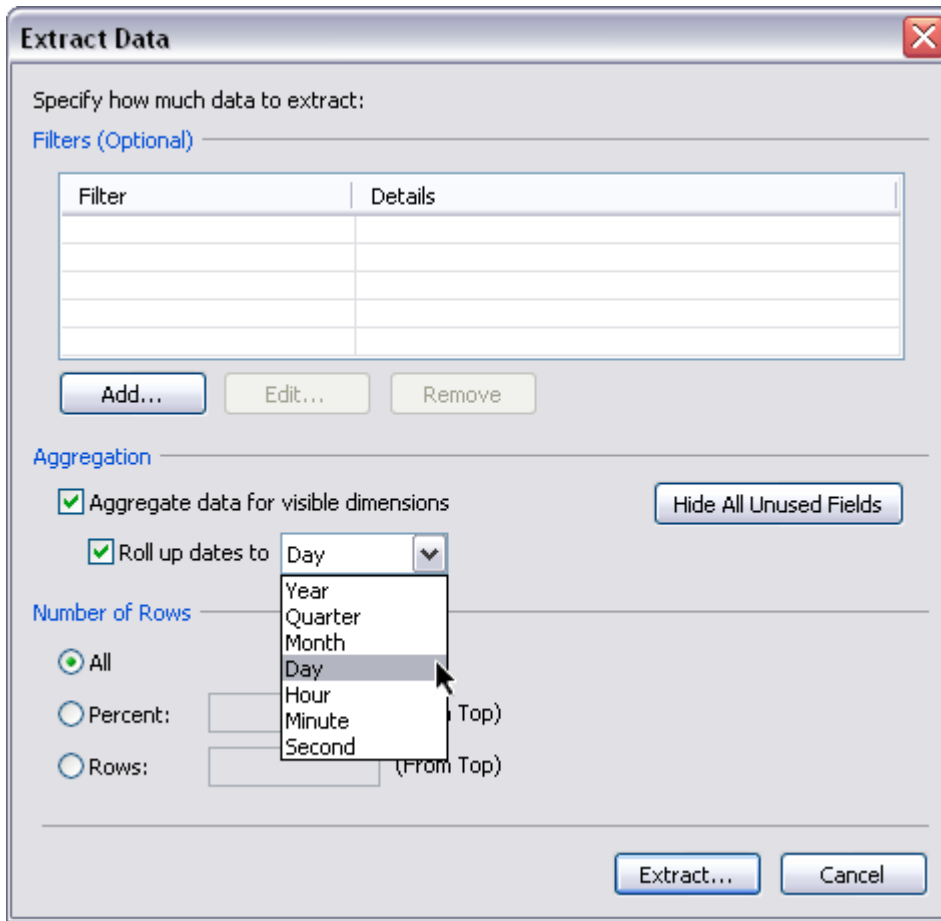
Why is it important?

This allows you to use extracts to reduce the size of your data, while keeping the most critical data available.

It also lets you present private data, such as survey results or compensation reports, in aggregate without showing the underlying detail such as names and salaries.



Extracts: Roll Up Dates



What's this?

This feature allows you to roll up multiple date records to any time period.

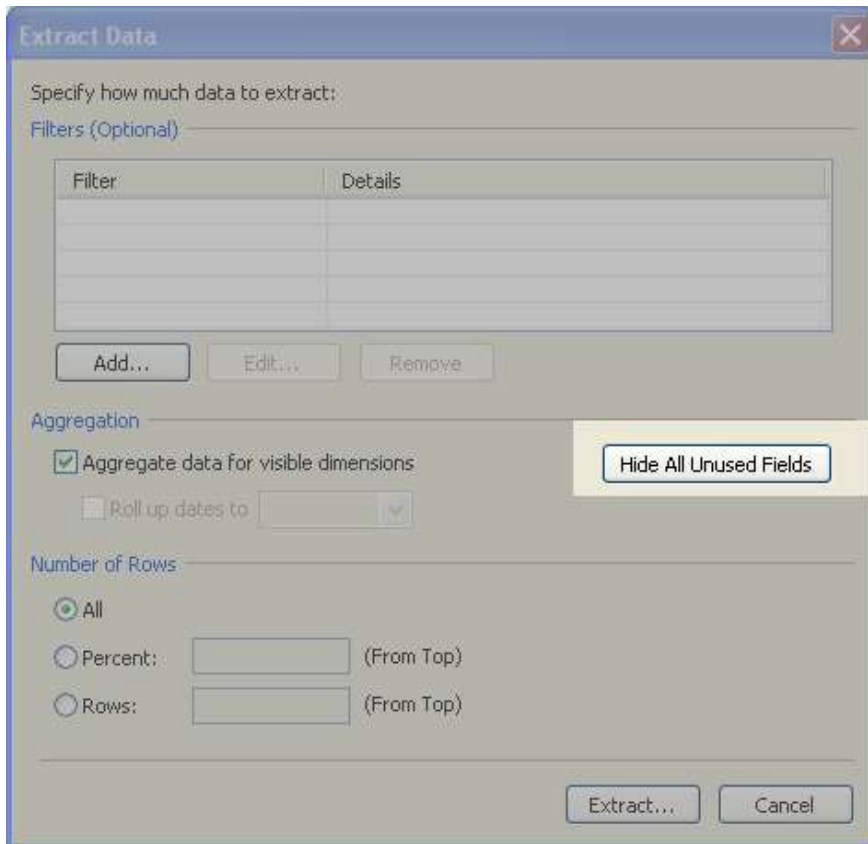
What's happening?

You're rolling up all data to the month level. Now each month will have one record in the extract, no matter how many individual records fall in that month.

Why is it important?

The allows you to use extracts to reduce the size of your data, while keeping the most critical data available.

Hide Columns Before Extract



What's this?

This feature allows you to extract only the fields needed to construct your views.

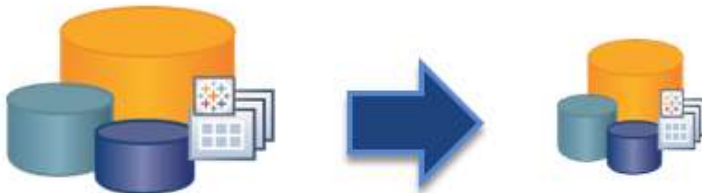
What's happening?

You're choosing to aggregate data for visible dimensions. Now only the data that is visible in your views will be included in the extract.

Why is it important?

The allows you to use extracts to reduce the size of your data, while keeping the most critical data available.

It also lets you present private data, such as survey results or compensation reports, in aggregate without showing the underlying detail such as names and salaries.



Better Data Access for Cubes



- New filter types for single-level attributes and sets
 - Pattern matching
 - Slider
 - Combo box
- New filter type for multi-level hierarchies: radio button list
- “Relevant values” for single-level attributes and sets
- Highlighting for cubes
- Actions for cubes, which can be used to create effective filters

Support for SSL



Using Tableau 5.0 with SSL provides client/ server authentication so that you can communicate securely.

- Tableau SSL works with certificates from RSA or Thawte
- SSL makes both the publish and the view process secure
- The Tableau Server Configuration tool is used to authenticate

Cut, Paste and Analyze



2008 Summer Olympics medal table

From Wikipedia, the free encyclopedia

The **2008 Summer Olympics medal table** is a list of National Olympic Committees (NOCs) ranked by the number of gold medals won in Beijing, the capital of the People's Republic of China, from 8 August to 24 August 2008. Approximately 11,008 athletes from 204 NOCs. Athletes from 87 countries won medals, leaving 117 countries without a medal, and 55 of them won at least one gold medal. Both of these gold medals, the most of any nation at these Olympics, and led the gold medal count for the first time in their Olympic history. Athletes from 110, Afghanistan^[1] Bahrain^[2] Mauritius^[3] Sudan^[4] Tajikistan^[5] and Togo^[6] won their first Olympic medals. Athletes from Bahrain, Mauritius, Sudan, Tajikistan and Togo won their first gold medals. An athlete from Sothia won its first medal as an independent NOC, having previously been part of Mozambique.^[7]

Medal table

See also: Olympic medal table

The ranking in this table is based on information provided by the International Olympic Committee (IOC) and is consistent with IOC custom by the number of gold medals the athletes from a nation have won (in this context, a "nation" is an entity represented by a National Olympic Committee). If nations are still tied, equal ranking is given and they are listed alphabetically. In boxing, judo, taekwondo and wrestling, two bronze medals are awarded in each weight class.^[11] Therefore, the total number of bronze medals awarded is 114. Additionally there was a tie for the silver medal in the women's 100 metres in athletics and no bronze was awarded.^[12] Ties for third in swimming freestyle meant that two bronze medals were awarded for those events.^[13]

Host nation (China)

To sort this table by nation, total medal count, or any other column, click on the ES icon next to the column title.

Rank	Nation	Gold	Silver	Bronze	Total
1	 China (CHN)	51	21	29	100
2	 United States (USA)	36	38	36	110
3	 Russia (RUS)	23	21	29	72
4	 Great Britain (GBR)	19	13	15	47
5	 Germany (GER)	16	10	15	41
6	 Australia (AUS)	14	15	17	46
7	 South Korea (KOR)	13	10	8	31
8	 Japan (JPN)	9	6	11	26
9	 Italy (ITA)	8	10	10	28
10	 France (FRA)	7	16	17	40
11	 Ukraine (UKR)	7	5	15	27
12	 Netherlands (NED)	7	5	4	16

What's this?

This allows you to instantly create visualizations with any data set.

What's happening?

When browsing the web or an email attachment, copy any table of data (here, Olympic medal data). Open Tableau and paste right in. It's that easy.

Why is it important?

You can visually analyze any table instantly just by dropping it into Tableau.

Tableau - Book 26

Clipboard_200903231158209

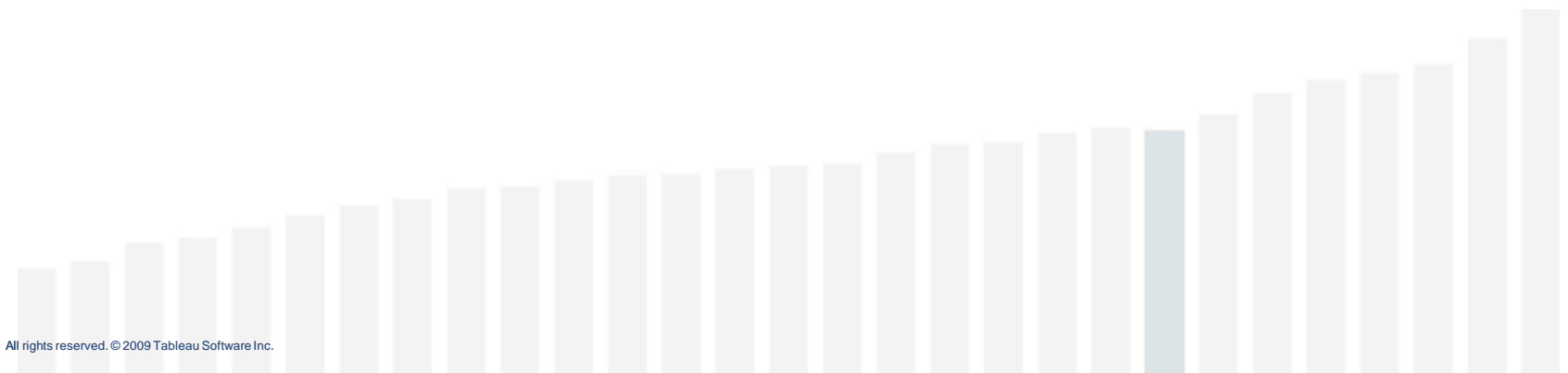
Columns: Measure Names

Rows: Nation ?

Nation ?	Sum of Bronze	Sum of Gold	Sum of Rank	Sum of Silver	Sum of Total
Alghanistan Afghanistan (AF)	1.0	0.0	81.0	0.0	1.0
Algeria Algeria (ALG)	1.0	0.0	86.0	1.0	2.0
Argentina Argentina (ARG)	4.0	2.0	36.0	0.0	6.0
Armenia Armenia (ARM)	6.0	0.0	76.0	0.0	6.0
Australia Australia (AUS)	17.0	14.0	9.0	18.0	48.0
Azerbaijan Azerbaijan (AZE)	2.0	0.0	82.0	1.0	3.0
Bahrain Bahrain (BHR)	4.0	1.0	39.0	2.0	7.0
Bahamas Bahamas (BAH)	1.0	0.0	85.0	1.0	2.0
Bahrain Bahrain (BHR)	0.0	1.0	82.0	0.0	1.0
Belarus Belarus (BLR)	9.0	4.0	16.0	4.0	17.0
Belgium Belgium (BEL)	0.0	1.0	48.0	1.0	2.0



Scalability & Performance



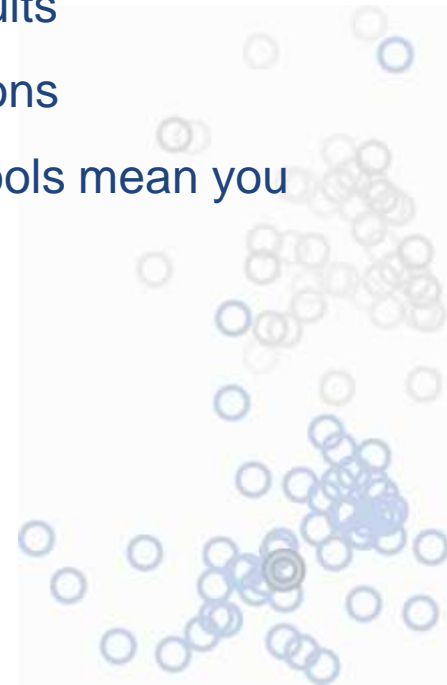
Server Scalability and Performance



We've made a huge investment in Tableau Server 5.0 so that it can scale up to the demands of any environment.

New features in performance and scalability include:

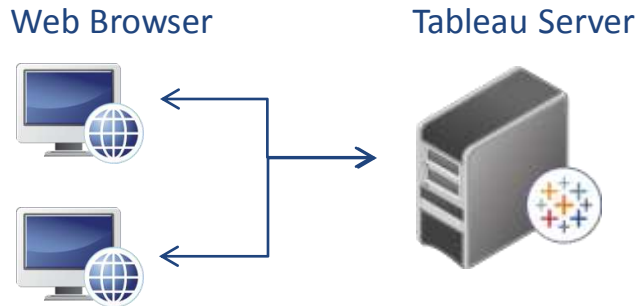
- **Scalability:** distribute server load to scale to thousands of users
- **Responsiveness:** multithreading so users wait less for results
- **Performance:** improvements in data shaping and connections
- **Ease of maintenance:** new management and monitoring tools mean you can use your IT staff efficiently



Scale to More Users by Distributing Server Load



from



What's this?

This allows you to add additional servers to support the same instance of Tableau Server.

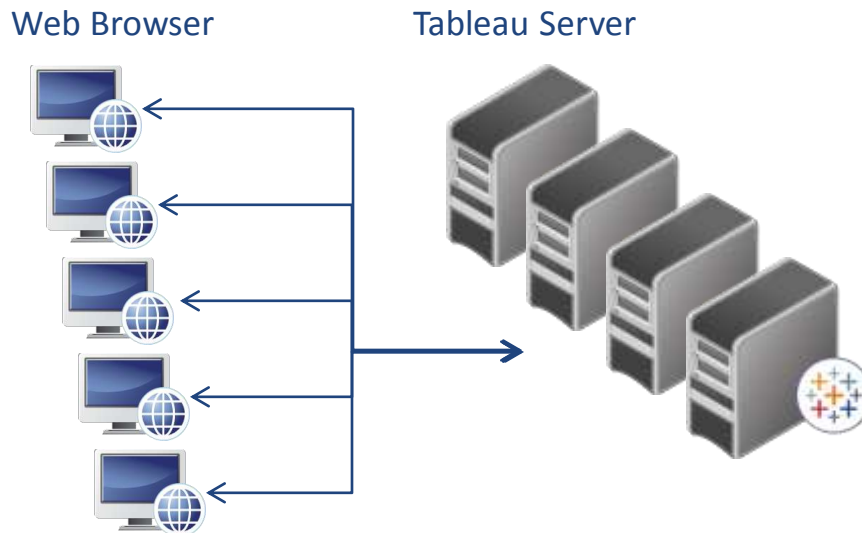
What's happening?

This customer found itself with more users than it could support on one server. So it simply added additional hardware to improve performance.

Why is it important?

Now it's much easier to add new users to your deployment—simply add additional computers whenever the load on your system becomes too great.

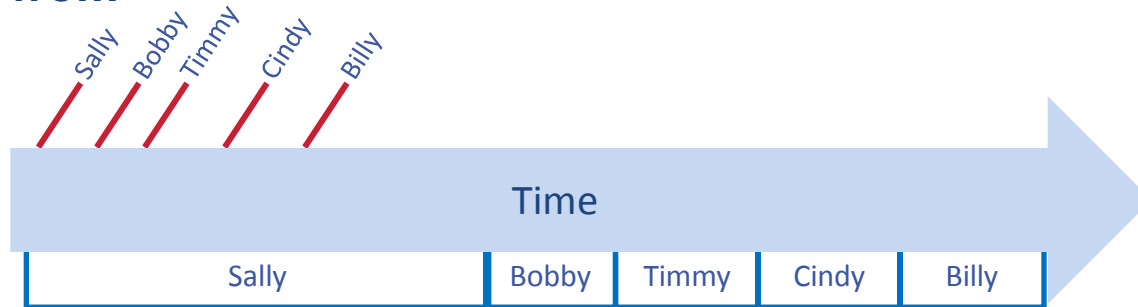
to



High Responsiveness with Multithreading



from



What's this?

This feature allows parallelized, rather than serial, requests to each VizQL server.

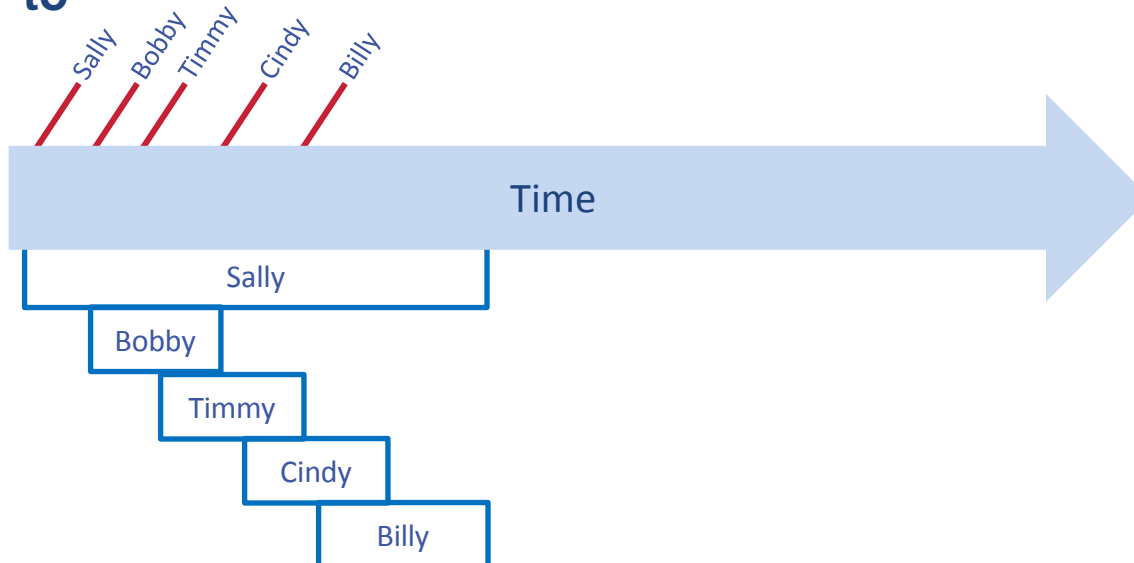
What's happening?

Five users are working on different views on the server. They are each submitting server requests based on how they are filtering and sorting views. Tableau is able to serve all those users much more quickly by using multithreading on the server.

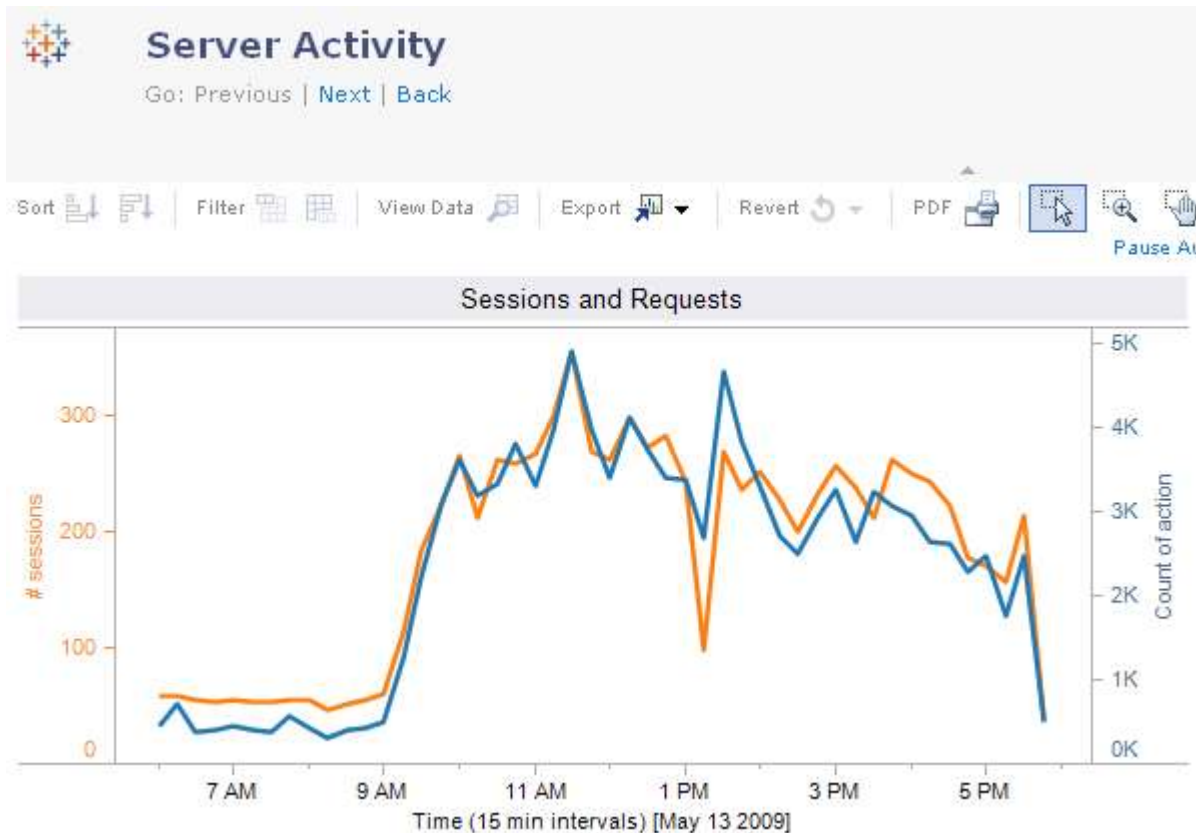
Why is it important?

User wait time is much shorter, and users don't have to wait for long-running processes to complete before getting a result.

to



Improved Logging and Monitoring



What's this?

Updated views in Tableau Server allow you to see user activity, space usage, server activity, task history, or customized views.

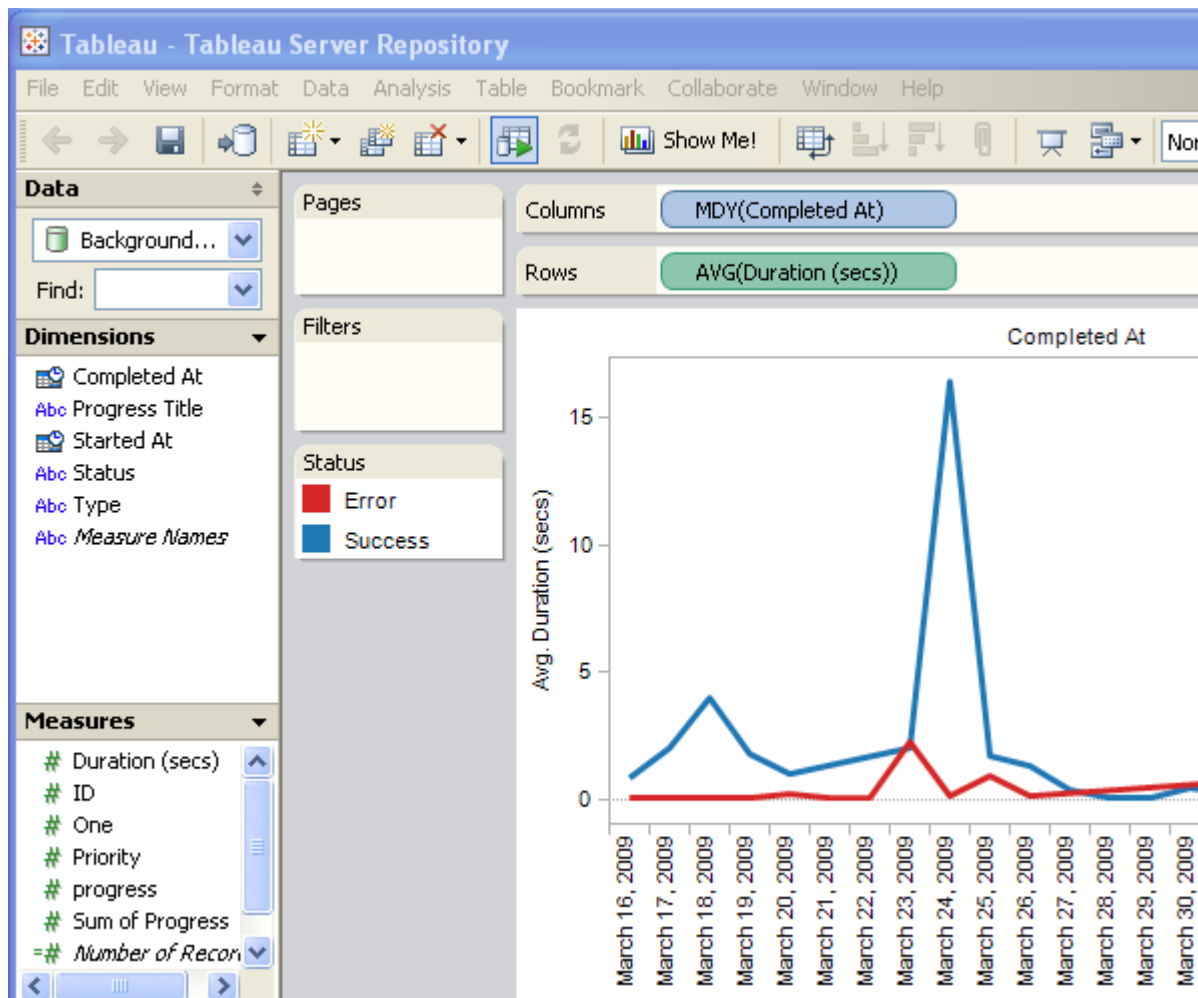
What's happening?

As an administrator, you're viewing Server Activity, one of the new administrative reports right on Tableau Server.

Why is it important?

You're able to get important information about activity on your server. For example, you can find out which workbooks take up the most space, which users are accessing the server most often, or what your peak request times are. You can also find opportunities to optimize your server.

Query the Tableau Server Repository



What's this?

This allows you to do your own reporting and analysis of Tableau Server usage by connecting to the database of repository tables.

What's happening?

This administrator is connected right to the database that monitors Tableau Server, and created a view to show the average duration of tasks, by status.

Why is it important?

You may have specific questions that are not answered by the standard views in Tableau Server. This allows you complete flexibility over the questions you ask and how you present the data.

Improved Query Performance



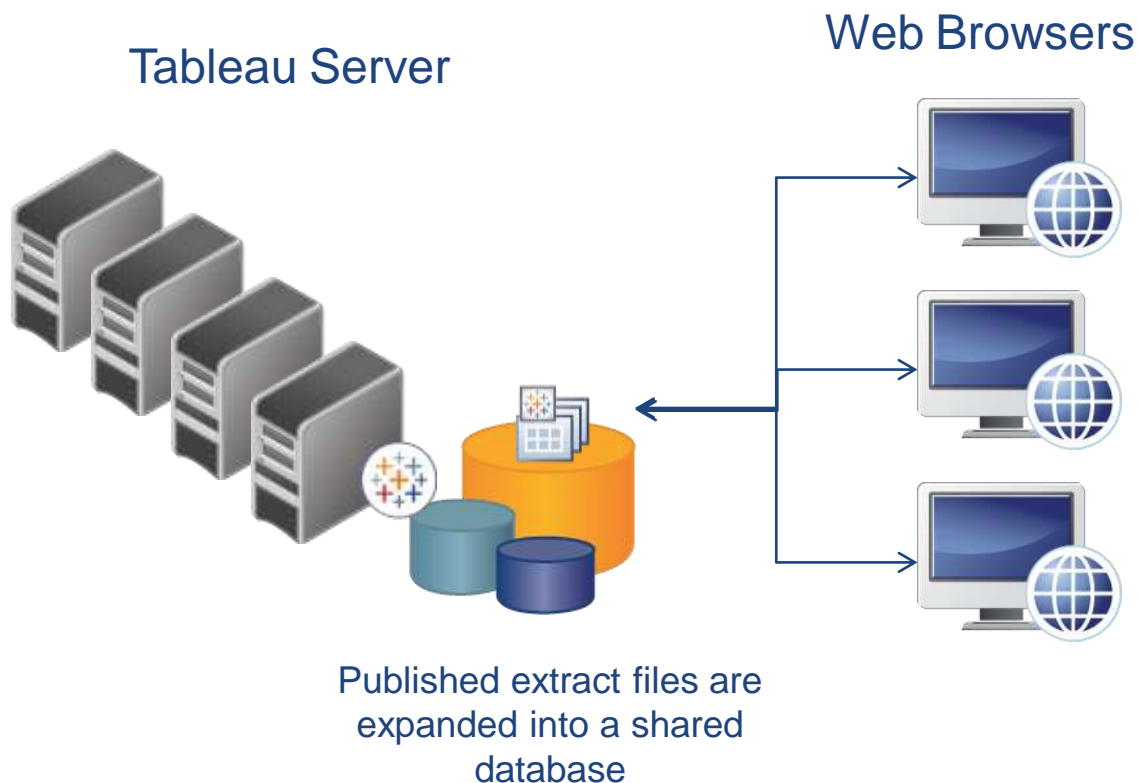
Extracts optimized for data storage

- Faster extract creation
- Smaller extracts
- Higher-performing filters

Judicious use of join logic across tables: Now only the joins necessary to create a view are created, speeding up database queries dramatically.

Optimized Teradata & Oracle connections: We've optimized queries for these database to support faster rendering.

Local Extract Engine



What's this?

This feature allows you to automatically load all extracts on Tableau Server into a single local database.

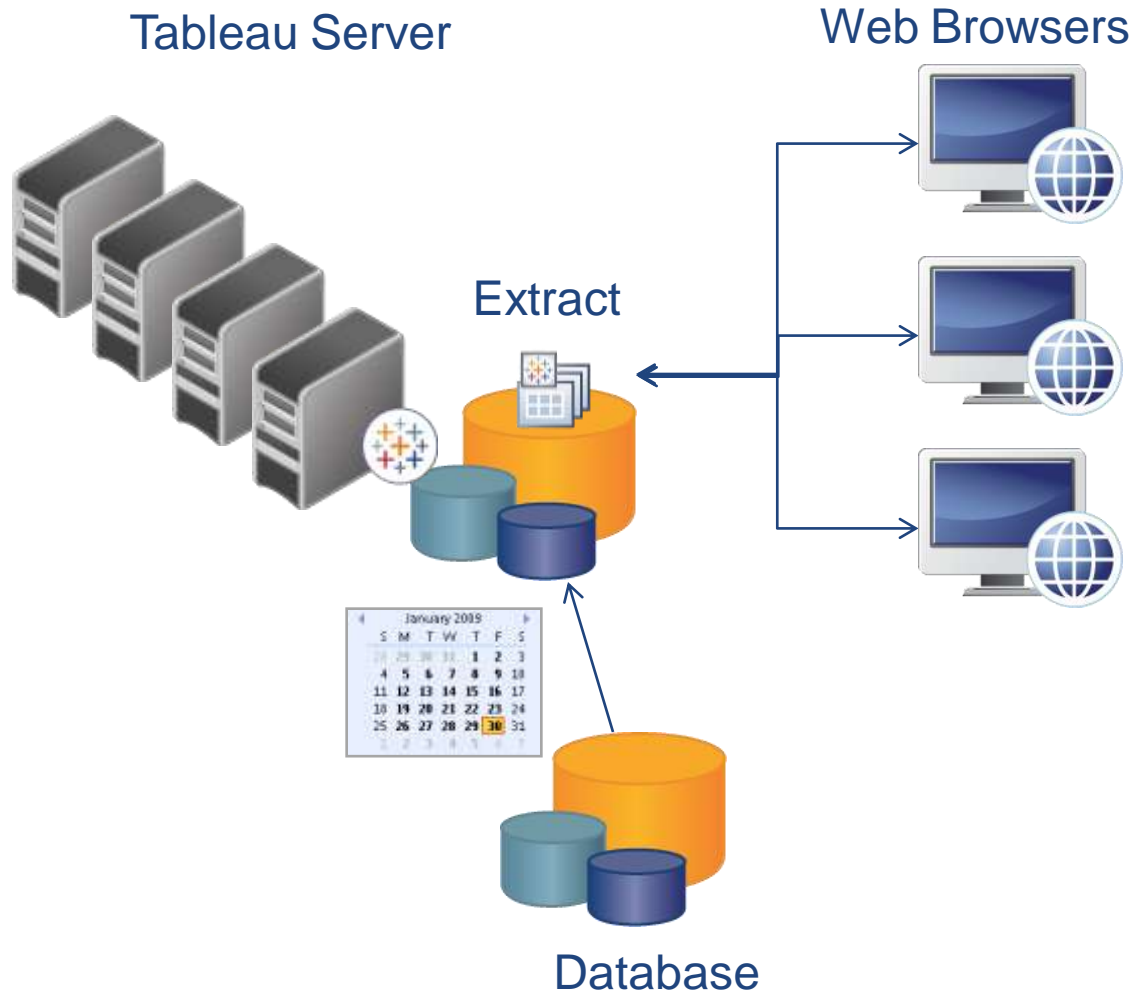
What's Happening?

Three users are accessing the same view on Tableau Server and working off a shared extract of the data.

Why is it important?

This allows you to increase the performance of Tableau Server by opening only one version of an extract per active session. It also lets you leverage more hardware to improve performance and enables a true multi-user server. This works with SQL Server, Firebird, MySQL, and Postgres databases.

Manage Server Load with Scheduled Extract Updates



What's this?

This allows you to update data on Tableau Server according to a regular schedule. This means that users get the most recent data but the database server is not prime-time queries.

What's happening?

You're working with a very large database. To increase speed, you create an extract and schedule an update every week. Your users can work with current data and get good performance, without overloading the database.

Why is it important?

You're able to control the timing of updates. For example, if your company's store data is updated every weekend, you can schedule updates for every Sunday night so the most recent data is on the server for colleagues to use.

New Server Command Prompt



```
C:\Program Files\Tableau\Tableau Server\5.0\bin\tabcmd.exe

tabcmd help           -- Help for tabcmd commands
tabcmd help <a command> -- Show help for a specific command
tabcmd help commands -- List all available commands

Usage: tabcmd <command> [options]

Global options:
-h, --help           Display tabcmd help.
-s, --server URL     Use the specified Tableau Server URL.
-u, --username USER Use the specified Tableau Server username.
-p, --password PASSWORD Use the specified Tableau Server password.
   --password-file FILE Read the Tableau Server password from FILE.

-x, --proxy HOST:PORT Use the specified HTTP proxy.
   --no-prompt        Don't prompt for a password.
   --no-proxy         Do not use a HTTP proxy.
   --no-lcookie       Save the session id on login.
                     Subsequent commands will not need to
                     log in.
                     Default: --cookie.
```

What's this?

This is a server automation utility that lets you manage users and groups, publish workbooks, sync with Active Directory, and get images from views.

What's happening?

This administrator has run the “tabcmd” utility and is now in the command prompt for Tableau Server.

Why is it important?

Now you can automate common server tasks to reduce errors and save administrators time.